

Stable Stainless Steel Linear Stage

7T67-6

- Miniature
- Solid box design
- 6 mm travel range
- Compact design
- Large mounting surface
- Easily stacked in X-Y configuration
- Made entirely of stainless steel – easily adapted for vacuum applications

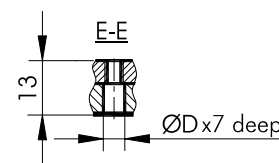
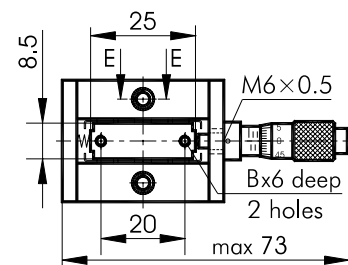
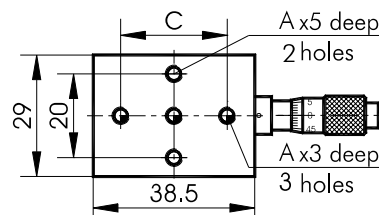
Stable Steel Translation Stages
7T67-6 and 7T67E-6 have low profile, and increased stability and precision.

Box design reinforces the stage, reducing flex. Steel, as a material, adds to stability.

The platform is preloaded by springs.

The stages can be **stacked immediately** to other units, or to their own type (e.g. in X-Y configuration). The stages can be used upside-down.

The stages made entirely of **stainless steel**.



7T67-6-9S35M-5

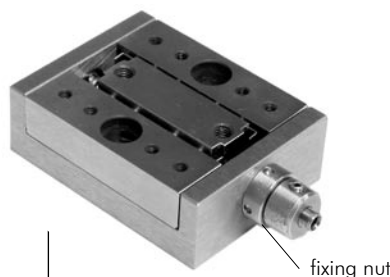
SPECIFICATIONS

Travel range	6 mm
Sensitivity	1 μ m
Reading accuracy	10 μ m
Angular deviation	<150 μ Rad
Tracking accuracy	2 μ m
Load capacity:	
Horizontal	45 kg
Vertical	3 kg
Weight	0.1 kg

Dimension	7T67E-6 (imperial)	7T67-6 (metric)
A	8-32	M4
B	4-40	M3
C, mm	25.4	25
D, mm	5.1	6



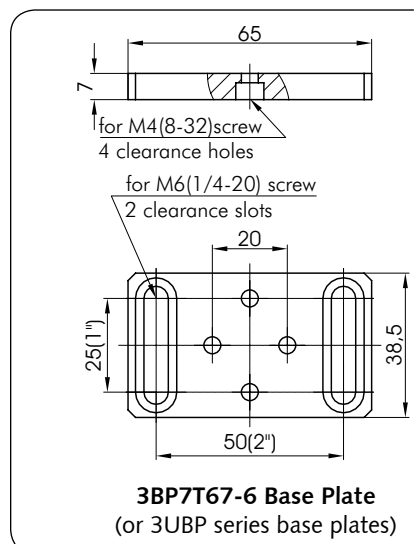
7T67-6-9S35M-5



7T67-6-9SH137MN



7T67-6-9SH137ML



3BP7T67-6 Base Plate
(or 3UBP series base plates)

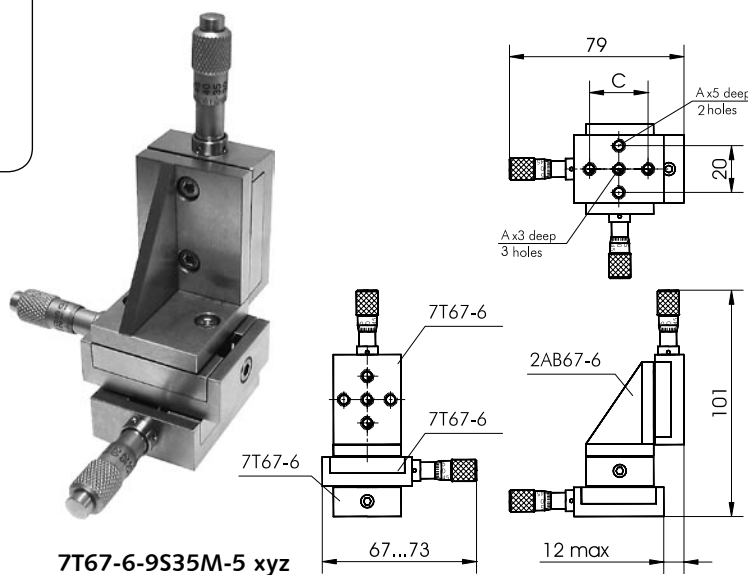
ORDERING INFORMATION

7T67-6 – model of **metric** dimensions – the **standard** version.

7T67E-6 – model of **imperial** dimensions – is produced **on demand**.

7T67V-6 - version for **vacuum**

Note: adjustment screw is **not included**. It can be ordered separately. Suitable micrometers are: 9S35M-5, 9SH137M, 9SH137MN.



7T67-6-9S35M-5 xyz

e-mail: sales@standa.it

http://www.standa.it

Phone: +370-5-2651474

Fax: +370-5-2651483

standa