

 *Search for products...*

Categories

6 cm RF Source  







Call Today

1-970-663-6988  
info@plasmaprocessgroup.com

6cm RF Ion Beam Source

For a Quote, Call 1-970-663-6988 or Email [info@plasmaprocessgroup.com](mailto:info@plasmaprocessgroup.com)

Part Number: 06RF  
Description: 6 cm RF ion beam source  
Options:

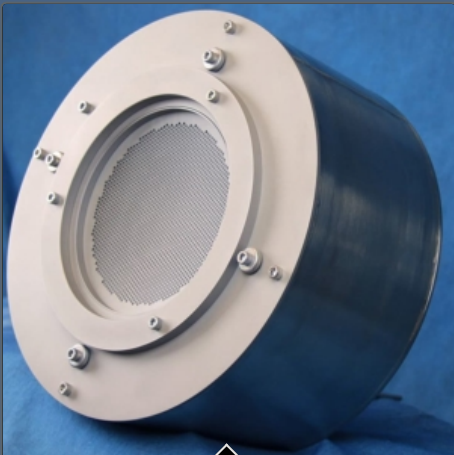
Grid assembly	<div>Choose an option </div>
Interface kit	<div>Choose an option </div>
Neutralizer	<div>Choose an option </div>
RFN interface	<div>Choose an option </div>
Power Supply	<div>Choose an option </div>
RF Matching	<div>Choose an option </div>
Cable Kit	<div>Choose an option </div>

SKU: 06RF Category: 6 cm RF Source Tags: Ion Beam Accessories, Ion Beam Parts, Ion Beam Power Supplies, Ion Beam Services, Ion Beam Source, Ion Beam Systems

Description	Additional information	Extra info
<div>Description</div> <p>Our smallest ion beam source, the 6cm RF can provide all the benefits of radio frequency ion source technology in a smaller, more compact, and less expensive form. With a maximum beam current of 200mA at 1500V, the 6cm source is ideal for research and smaller production systems.</p> <p>This source also finds a home in etch and ion beam figuring (IBF) systems with its highly divergent or highly convergent grid options. The body of this source is not water-cooled, thus requiring only two feedthroughs, RF power and DC Bias/Gas. Designed around the flexibility of internal mounting, the 6cm source is also capable of being mounted directly to a flange for process flexibility. As with all RF sources, the 6cm source can be run with both inert and reactive gases, making the 6cm ideal for any ion beam process.</p>		

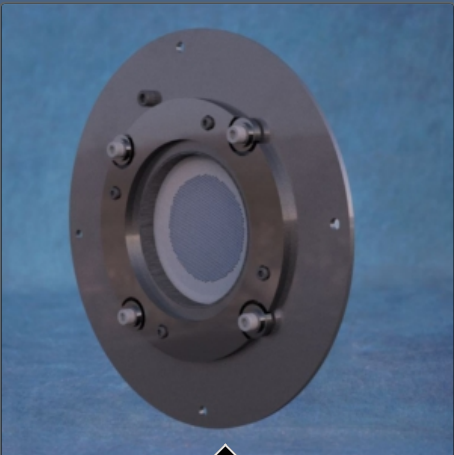


Related products



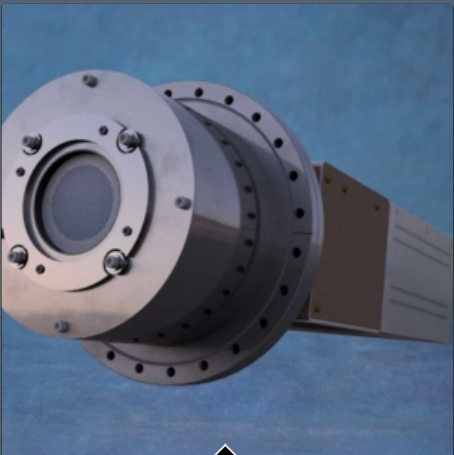
12 cm RF Ion Beam Source  
For a Quote, Call 1-970-663-6988 or Email [info@plasmaprocessgroup.com](mailto:info@plasmaprocessgroup.com).

Read More



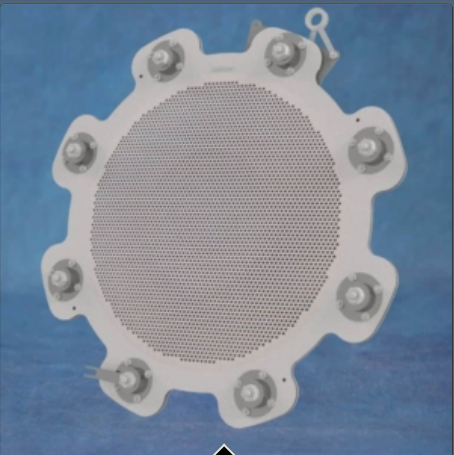
6 cm Grid Assembly, 3 Grid Moly, 25 cm FP Convergent with Mount Hardware  
For a Quote, Call 1-970-663-6988 or Email [info@plasmaprocessgroup.com](mailto:info@plasmaprocessgroup.com).

Read More | Show Details



6 cm Interface Kit, 10" CF Flange Mount  
For a Quote, Call 1-970-663-6988 or Email [info@plasmaprocessgroup.com](mailto:info@plasmaprocessgroup.com).

Read More | Show Details



16 cm Grid Assembly, 3 Grid, Moly, 3 FP 104/12/40 cm, Ø65/Ø35 Spacing, S Ø20 Thick  
For a Quote, Call 1-970-663-6988 or Email [info@plasmaprocessgroup.com](mailto:info@plasmaprocessgroup.com).

Read More | Show Details

Copyright 2020 Plasma Process Group, Inc. All rights reserved. | website design by PPG and

OK Learn more

Cookie and Privacy Settings

How we use cookies

We may request cookies to be set on your device. We use cookies to let us know when you visit our websites, how you interact with us, to enrich your user experience, and to customize your relationship with our website.

Click on the different category headings to find out more. You can also change some of your preferences. Note that blocking some types of cookies may impact your experience on our websites and the services we are able to offer.

Essential Website Cookies

These cookies are strictly necessary to provide you with services available through our website and to use some of its features.

Because these cookies are strictly necessary to deliver the website, refusing them will have impact how our site functions. You always can block or delete cookies by changing your browser settings and force blocking all cookies on this website. But this will always prompt you to accept/refuse cookies when revisiting our site.

We fully respect if you want to refuse cookies but to avoid asking you again and again kindly allow us to store a cookie for that. You are free to opt out any time or opt in for other cookies to get a better experience. If you refuse cookies we will remove all set cookies in our domain.

We provide you with a list of stored cookies on your computer in our domain so you can check what we stored. Due to security reasons we are not able to show or modify cookies from other domains. You can check these in your browser security settings.

Other external services

We also use different external services like Google Webfonts, Google Maps, and external Video providers. Since these providers may collect personal data like your IP address we allow you to block them here. Please be aware that this might heavily reduce the functionality and appearance of our site. Changes will take effect once you reload the page.

Google Webfont Settings:

Google Map Settings:

Google reCaptcha Settings:

Vimeo and Youtube video embeds:

Privacy Policy

You can read about our cookies and privacy settings in detail on our Privacy Policy Page.

[Privacy Policy](#)

Accept settings

Hide notification only