

# High Power Polarization Maintaining Circulator (HPMCIR Series)

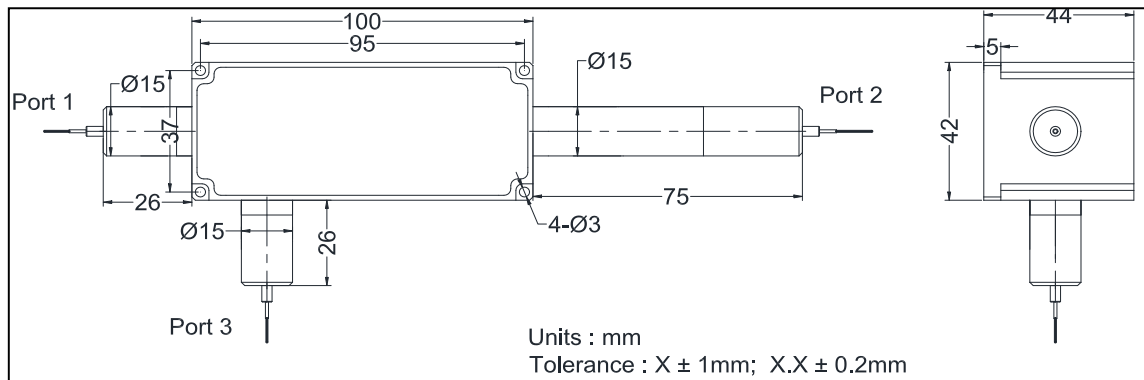
Rev 11

The High Power Polarization Maintaining Circulator is characterized with low insertion loss, high isolation, high power handling, high return loss, high extinction ratio. It is ideal for fiber laser and instrumentation applications.

## Specifications

Parameter	Unit	Value
Center Wavelength ( $\lambda_c$ )	nm	1064
Operating Wavelength Range	nm	$\lambda_c \pm 10$
Min. Isolation, $\lambda_c$ , 23 °C	dB	25
Typ. Insertion Loss, 23 °C	dB	0.5
Max. Insertion Loss, 23 °C	dB	0.8
Min. Extinction Ratio	dB	20
Min. Crosstalk	dB	45
Min. Return Loss	dB	45
Max. Average Optical Power port 1 → Port 2	W	50
port 2 → Port 3	W	10
Max. Peak Power for ns Pulse	kW	20
Max. Tensile Load	N	5
Fiber Type		Specified by ordering info
Operating Temperature	°C	10 to +50
Storage Temperature	°C	0 to +60

## Package Dimensions



## Ordering Information

HPMCIR-①①-②②-③③-④④-⑤⑤-⑥⑥-⑦⑦-⑧⑧

①①: Wavelength 06 - 1064 nm SS - Specify	②②: Handling Power 50 - 50 W SS - Specify	③③: Connector Type N - None	④④: Fiber Jacket B - bare fiber L - 900 $\mu$ m loose tube S - Specify
⑤⑤: Fiber Length 1 - 1.0 m S - Specify	⑥⑥: Working Axis F - Fast axis blocked	⑦⑦: Fiber Type 1-Nufern-FUD-3460 2-Nufern-PLMA-GDF-20/130-M S - Specify	⑧⑧: Power Type P - Pulse Application C - Continuous Wave