

## Model Name

STI-244GP

ST: Saga Telecom

I: Industrial grade

2: 2 optical ports

4: 4 Ethernet ports

4: 4 PoE ports

G: Gigabit based

P: Support PoE

It is advised to read specific product description for more information.



## Key Features

- 4\*10/100/1000Base-T RJ45 PoE port, 2\*1000Base-X SFP fiber port
- DC 44~57V input, redundant power supply with polarity reverse/over-voltage protection
- Complies with IEEE802.3af PoE and IEEE802.3at PoE+ standard
- Powerful Dip switch function(on the top panel)
  1. Port isolation;
  2. 250m long distance;
  3. QoS;
  4. PoE watchdog
- Support 10K Bytes Jumbo frame
- Support 4KV surge protection and ESD: Air-15kV, Contact-8kV Protection
- IP40 fan-less and Din-rail design
- Operation temperature: -40 °C ~+75°C

With above features, it is an ideal solution for IP Surveillance, wind, electricity, assembly automation, subway PIS, power SCADA, sewage treatment, metallurgy, intelligent transportation, rail transportation, military and other industries.

**Specification**

Product Name	6 port 10/100/1000Mbps Industrial PoE Switch
Port	4*10/100/1000M PoE + 2 port 1000M Fiber
Network Medium	10BASE-T: Cat 3, 4, 5 or above UTP(≤100 meter) 100BASE-TX: Cat 5 or above UTP (≤100 meter) 1000BASE-TX: Cat5 or above UTP (≤100 meter)
Network protocol	IEEE 802.3 10Base-T Ethernet IEEE 802.3u Fast Ethernet IEEE 802.3ab Gigabit Ethernet IEEE 802.3x Full-Duplex Flow Control IEEE 802.3az Energy Efficient Ethernet IEEE 802.3af Power-Over-Ethernet IEEE 802.3at Power Over Ethernet plus PSE
Fiber Option	SFP Pluggable Module(LC) SM: 1310nm/1550nm, 20Km; 1490nm/1550nm, 40~100Km MM: 1310nm, 2Km; 850nm, 500-meter
Switching Capacity	12Gbps
Throughput	17.856Mpps
Packet Buffer	3M
MAC Address	2K
VLAN	4K
Jumbo Frame	10Kbytes
Transfer Mode	Store and forward, forwarding delay<5us
MDX/MIDX	Support
Watchdog	Support
Network Topology	Star topology Bus topology Tree Topology
MTBF	200,000 hours
PoE Protocol	IEEE802.3af(15.4W), IEEE802.3at(30W)
PoE Wiring	1/2(+), 3/6(-)
PoE Budget	120W
Power Voltage	Input Voltage: DC 44-57VDC, Removable 4 PIN Industrial Terminal Block
Input current	3A Max
Total power consumption	Full loading ≤5W
Reverse polarity protection	Support
Over-voltage protection	Support
Industry Standard	Surge protection of power: IEC 61000-4-5 Level 3 (4KV/2KV) (8/20us) Surge protection of Ethernet ports: IEC 61000-4-5 Level 3 (4KV/2KV) (10/700us) DIP: IEC 61000-4-11 Level 3 (10V) ESD: IEC 61000-4-2 Level 4 (8K/15K) Shock: IEC 60068-2-27 Free fall: IEC 60068-2-32 Vibration: IEC 60068-2-6

Protection Level	IP40
Installation Method	Din Mounted
Security Certificate	CE/FCC/RoHS
Working Environment	Working Temperature: -40°C~75°C Storage Temperature: -40°C~85°C Relative Humidity: 5%~95%, non-condensing
DIP	<ol style="list-style-type: none"><li>1. Port Isolation</li><li>2. 250m long distance mode(1-2 ports)</li><li>3. QoS(1-2 ports)</li><li>4. PoE watchdog</li></ol>
LED Indicators	<p><b>PWR(Power indicator), Green Color</b> On: power status is normal Off: power off or power connection failure</p> <p><b>S(PoE usage indicator), Red Color</b> On: PoE usage <math>\geq</math> 90% rated budget Blinking: 50%&lt;PoE usage&lt;90% rated budget Off: PoE usage&lt;50% rated budget</p> <p><b>Ethernet Port</b> <ol style="list-style-type: none"><li>1. Green Indicator On: port link up Off: port link down Blinking: data is in normal transmission</li><li>2. Yellow Indicator PoE ports On: PoE working Off: PoE not working</li></ol></p> <p><b>Fiber port, Green Color</b> On: port link up Off: port link down Blinking: data is in normal transmission</p>

## Packing list

- 1pc switch
- 1pc user manual

Shipping box information(**Below information is approximately accurate**)

Product size: 130\*98\*30mm

Inner box size: 184\*150\*50mm

Product weight: 0.55Kg

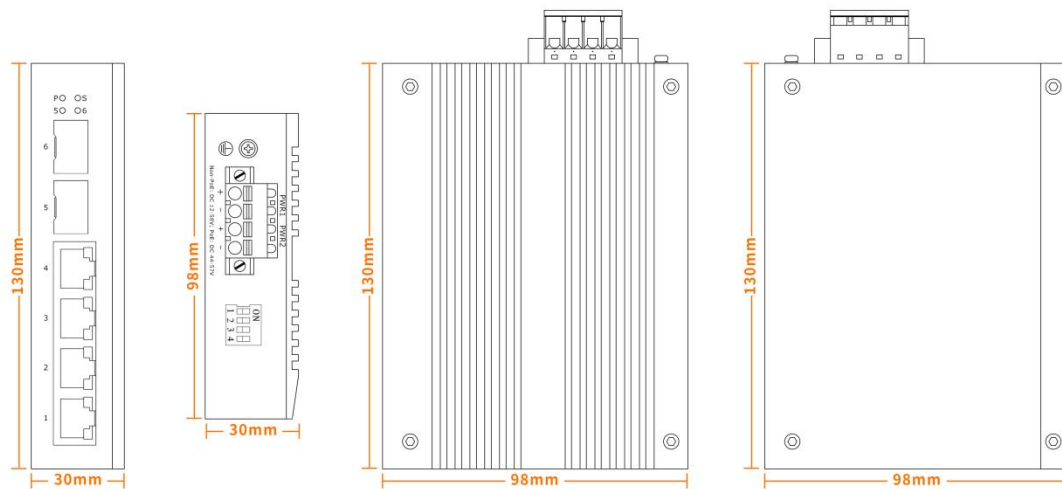
Packing weight: 0.7Kg

Master box size: 385\*330\*320mm

Packing quantity: 24Pcs

Packing weight: 17Kg

## Mechanical Drawing



**Product Picture**



## FAQ

### ● Leadtime

1. Production time is usually 5~7 working days for standard(non-customized) models (no more than 50pcs).
2. Shipping time is usually 4~7 days by air
3. In total, it takes 10~15 days for a client to receive the order.

### ● Shipment

1. We will send the goods by air(DHL, UPS or FEDEX) or by sea(for bulk order)
2. It is fine to ship purchased items via customer's shipping account or forwarder.

### ● MOQ

1. 1 Pc/Pair(It is NOT free, Saga Telecom do NOT do FREE SAMPLES)
2. It is fine to have sample testing before bulk order, but 1 Pc/Pair is ONLY about sample testing.
3. When testing proves fine, MOQ is 20pcs(discussion is required if it is about smaller quantity).

### ● Warranty

1. 1 year for commercial models(STC series) and 3 years for industrial models(STI series)
2. Please kindly refer to the "Warranty Policy" for more information.
3. Technical assistance is always available

### ● Payment

1. T/T transfer and PayPal, FULL AMOUNT BEFORE SHIPMENT.
2. It is fine to pay 50% first and another 50% before shipment for bulk order.
3. It is fine to be paid via customer's forwarder(this is usually about RMB payment).

### ● Transaction cost

1. It is standard charge 25usd for EACH T/T transfer whatever the invoice value is.
2. It is 5usd for every 100usd to PayPal a/c, this ratio is standard charge by PayPal

### ● RMA

1. Please contact us ASAP once there is any problem(package or usage)with the supplied products.
2. For every 100pcs, there will be 2 extra free units(2% RMA) against immediate warranty coverage.
3. This rule stands for all Saga Telecom models and even there is not an after-sales issue.

(1) If it is about missing/faulty parts in the packing box.

Please simply use the extra units for the replacement and let us know this problem(we will improve).

(2) If it is about usage problem.

Saga Telecom will provide technical support and send new units when necessary.

### ● OEM

1. Supported, but discussion is required if it is about complex requirements.
2. Below are usual OEM services available.
  - (1) Show client's logo/model on the device/label/management interface...
  - (2) Use client's packing box
  - (3) Design client's product PVC sticker
  - (4) Customize some parts of a model like rear panel/power input terminal block...

Please know that there might be extra cost for OEM services.

**Ordering Information**

<b>Industrial PoE Switch(Unmanaged Series), DC44V~DC57V, Din Mounted</b>	
Model	Description
STI-054FP	1*10/100M RJ45+4*10/100 PoE, 120W budget
STI-088FP	8*10/100 PoE, 240W budget
STI-054GP	1*10/100/1000M RJ45+4*10/100/1000 PoE, 120W budget
STI-088GP	8*10/100/1000 PoE, 240W budget
STI-01616GP	16*10/100/1000 PoE, 240W budget
STI-111FP	1*100M Fiber+1*10/100M PoE, 30W budget
STI-122FP	1*100M Fiber+2*10/100M PoE, 60W budget
STI-144FP	1*100M Fiber+4*10/100M PoE, 120W budget
STI-188FP	1*100M Fiber+8*10/100M PoE, 240W budget
STI-222FP	2*100M Fiber+2*10/100M PoE, 60W budget
STI-244FP	2*100M Fiber+4*10/100M PoE, 120W budget
STI-266FP	2*100M Fiber+6*10/100M PoE, 180W budget
STI-111GP	1*100/1000M Fiber+1*10/100/1000M PoE, 30W budget
STI-122GP	1*100/1000M Fiber+2*10/100/1000M PoE, 60W budget
STI-222GP	2*100/1000M Fiber+2*10/100/1000M PoE, 60W budget
STI-144GP	1*100/1000M Fiber+4*10/100/1000M PoE, 120W budget
STI-154GP	1*100/1000M Fiber+1*10/100/1000M RJ45+4*10/100/1000M PoE, 120W budget
STI-188GP	1*100/1000M Fiber+8*10/100/1000M PoE, 240W budget
<b>STI-244GP</b>	<b>2*100/1000M Fiber+4*10/100/1000M PoE, 120W budget</b>
STI-288GP	2*100/1000M Fiber+8*10/100/1000M PoE, 240W budget
STI-21616GP	2*100/1000M Fiber+16*10/100/1000M PoE, 240W budget
STI-488GP	4*100/1000M Fiber+8*10/100/1000M PoE, 240W budget
STI-888GP	8*100/1000M Fiber+8*10/100/1000M PoE, 240W budget

<b>Industrial Din Power Supply(-40 °C ~+75°C)</b>	
STI-PA-75W-48V1.56A	90-264VAC Input, 48VDC Output, 1.56A, 75W, Metal Case, Din Mounted
<b>STI-PA-120W-48V2.5A</b>	<b>90-264VAC Input, 48VDC Output, 2.5A, 120W, Metal Case, Din Mounted</b>
STI-PA-240W-48V5A	90-264VAC Input, 48VDC Output, 5A, 240W, Metal Case, Din Mounted
STI-PA-480W-48V10A	90-264VAC Input, 48VDC Output, 10A, 480W, Metal Case, Din Mounted

<b>Industrial SFP Transceiver(-40 °C ~+75°C)</b>	
STI-SFP1G-MMD0.5-850LC	1G, Multimode, Dual Fiber, 0.5KM, 850nm, LC port
STI-SFP1G-MMD2-1310LC	1G, Multimode, Dual Fiber, 2KM, 1310nm, LC port
STI-SFP1G-SMD20-1310LC	1G, Singlemode, Dual Fiber, 20KM, 1310nm, LC port
STI-SFP1G-SMS20-1310/1550LC	1G, Singlemode, Single Fiber, 20KM, 1310/1550nm, LC port

## Remarks

1. SFP Transceiver&Power Supply are **NOT** included in the packing box, **need to purchase individually.**
2. Listed SFP transceiver and power supply are **COMMONLY** used for this device.

Please talk with us for more specifications.

## After-sales support

Warranty comes in effect from the date of delivery.

If something is wrong with the package or usage, please let us know asap.

### Case 1, package problem

Any faulty/missing parts in the packing box, Saga telecom will help do the replacement or refund.

### Case 2, usage problem

The standard and most effective procedures(get a feedback form from us) are as below

1, describe what happened, examples as below

- When this problem occurred
- What you did to adjust it like restart the device or change new accessories
- How you use this device like outdoor use for connecting some IP cameras

With this information, Saga telecom could quickly know what is going on and do trouble-shooting

2, provide as many actual photos/video as possible

Wrong connection or improper use may occur.

In this case, photos and videos are helpful and efficient.

3, prepare necessary and relevant accessories such as SFP module/network cable/patch-cord...

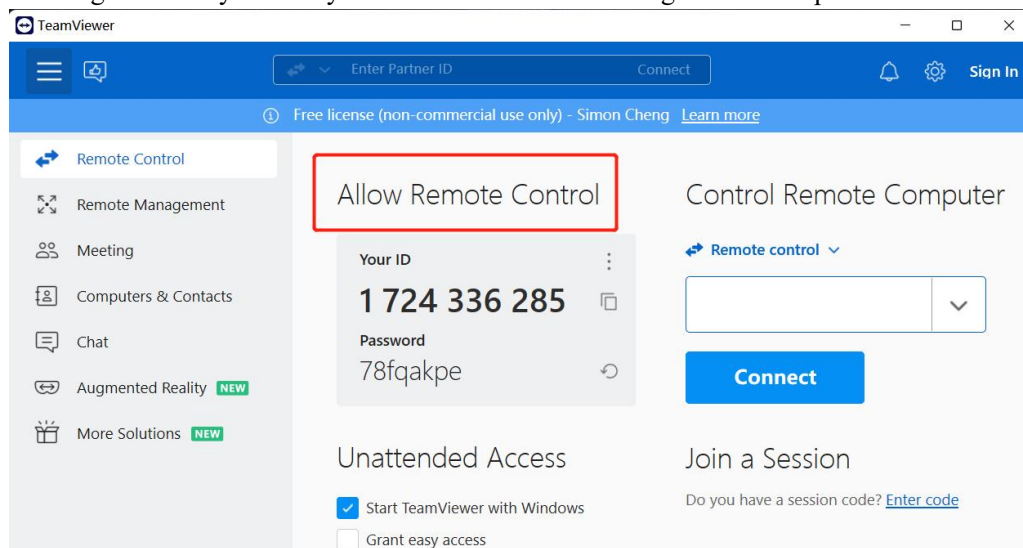
An example is, in a linear network connection, if one SFP module fails, the whole system might have a transmission problem.

The solution would be as simple as replacing a new workable SFP module.

With in-hand accessories, sometimes it is easy to fix the problem.

4, get ready for online meeting

Saga telecom might remotely control your PC to do trouble-shooting with the help of Teamviewer.



For more information, please talk with us or visit [www.sagatelecom.com.cn](http://www.sagatelecom.com.cn)