



产品手册

COMPANY BROCHURE



济南众木智能科技有限公司

地址: 济南市历城区工业北路
电话: +86-0531-88618510
传真: +86-0531-88618510

JINAN SEQUOYATEC CO.,LTD.

Address: No. 277, Gongyebei Road, Licheng District, Jinan, Shandong, China
Tel/Fax: +86-0531-88618510
Email: sales@sequoyatec.com

www.sequoyatec.com

济南众木智能科技有限公司
JINAN SEQUOYATEC CO.,LTD

www.sequoyatec.com



CONTENTS

1	// About Us//
2	// STL1309A Laser Machine //
3	// STL1325A Laser Machine //
4	// STL1325AM Mix laser cutting machine//
5	// STL1309P Laser Machine//
6	// ST20FD Fiber Marking Machine //
7	// ST1325A Woodworking CNC Router //
8	// ST1325D/T 2/3 Production Woodworking Machine //
9	// ST1325ATCL Automatic Tool Changing CNC Router//
10	// ST1530-4A 4 Axis CNC Router//
11	// ST1530-5A 5 Axis CNC Router//
12	// ST1325N Nesting woodworking center //
13	// STM2480B Vacuum Press Membrane Machine //
14	// ST1325S Stone CNC Router //
15	// ST1020H CNC Gantry Milling Machine //

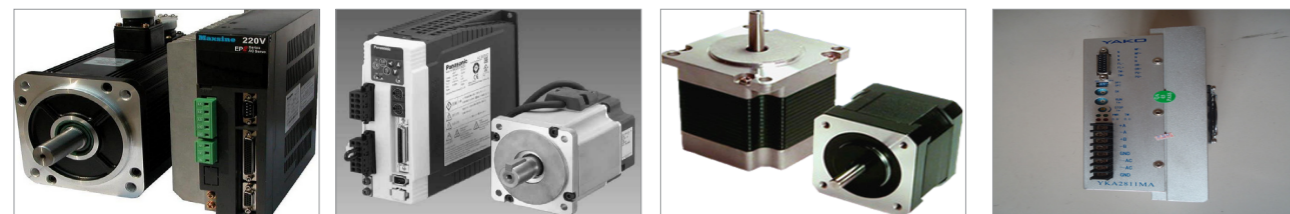
多种 CNC 控制系统, 维宏, 新代, 锐志天宏, 众泰克, 众为兴等

A variety of industrial-grade CNC control systems, NC-studio, SYNTEC, RichAuto DSP, Multech, Adtech and so on



多样驱动系统, 满足不同客户需求

Diverse drive system, to meet different customer needs



进口国产高动力, 低噪音电主轴

Imports domestic high-power, low-noise electric spindle



台湾原装方轨, 丝杠

Original Hiwin/PMI linear guide rail, Ball screw from Taiwan



专业进口、国产真空泵, 吸附力强

Professional imports, domestic pumps, strong adsorption



专业变频器

Professional Inverter



热刺, 埃佛尔, 永利, 微距激光管, 工作稳定寿命长

Reci EFR, Yongli, Weiju laser tube, Stability and long service life



关于我们

COMPANY PROFILE

济南众木智能科技有限公司位于济南, 是一家致力于研制开发、生产与销售数控机器于一体的高新技术企业。主营产品包括: 木工雕刻机、石材机、加工中心、激光雕刻切割机等。

公司产品已通过 CE、ROHS 认证, 每台机器在出厂前都会经过严格的检验。每种产品的设计已得到国内外客户的认可。

为满足不同客户的需求, 公司将不断引进国际先进技术和生产加工工艺, 积极进取, 研制和开发出高性能高质量的机器。

同时, 我们希望广大客户继续关注和支持我们, 我们将不断努力, 做的更好。

Located in Jinan, Jinan Sequoyatec Co., Ltd specializes in researching, developing, manufacturing and selling cnc machines. Our main products include wood cnc router, stone cnc router, processing center, laser engraving and cutting machines, etc.

Our company products have acquired CE ROHS certificate and each machine will be strictly tested before shipping to customers to keep absolute safety. Different design of our machines have been accepted by customers both at home and abroad.

In order to meet the requirements of different clients, our company will go on importing advanced international technology and production process, keeping positive attitude to manufacturing more high performance and top quality machines.

Meanwhile, we hope all customers continue to supporting us and paying more attention on our products, we will try our best to do it better.

STL1309A

激光雕刻切割机

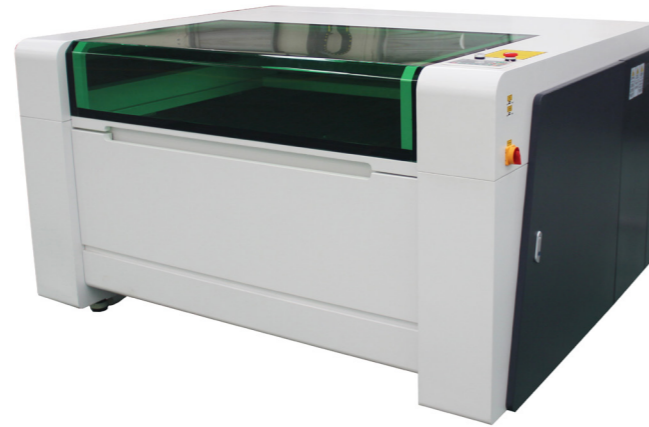
LASER ENGRAVING AND CUTTING MACHINE

机器特点:

- 采用国际最先进的 DSP 控制技术, 速度快, 操作简单。
- 使用 USB 端口数据接口, 并配有内置大容量存储器, 大大提高工作速度和效率。
- 支持多种文件格式: CDR、DXF、PLT、AI、BMP、DST、JPG 等格式。

Machine Features:

- The most advanced DSP controlling technology, high speed, easy operation.
- It uses USB put data interface with large mass storage device to provide high working speed and efficiency.
- Support kind of formats: CDR, DXF, PLT, AI, BMP, DST, JPG and other formats.



应用领域:

- 本类型机器适用于服装、皮革、布制玩具、电脑绣花裁剪、模型、工艺品、竹木制品、广告装饰、建筑装潢、包装印刷、纸制品等行业。
- 橡胶、塑料、布料、皮革、毛料、水晶、有机玻璃、瓷砖、玉石、竹制品、木制品。

Application:

- Garment, leather, cloth toys, computer embroidery cutting, mould, crafts, bamboo and wood, advertising and building decoration.
- packaging and printing, paper and products, etc. Rubber, plastic, cloth, leather, woollens, crystal, organic glass, tile, jade, bamboo and wooden products, etc.

技术参数 / Technical Parameters

型号 / Model	STL9060A	STL1309A	STL1410A	STL1610A
加工尺寸 / working area	600 X 900mm	1300 X 900mm	1400 X 1000mm	1600 X 1000mm
功率 / Laser power	80W/100W/120W/150W/180W			
分辨率 / Resolution Ratio	< 0.025	定位精度 Positioning accuracy		0.1mm
最小切割文字尺寸 Min. cutting size	中文 (chinese) 1.5mm 英文 (english) 0.8mm	重复定位精度 / Repositioning accuracy		< 0.1mm
软件 / Software support	AutoCAD/Type3/Coreldraw, etc		工作电压 / Power supply	220V/1Ph/50Hz

STL1325A

激光雕刻切割机

LASER CUTTING MACHINE

机器特点:

- 机身采用整体式全钢机身, 经低温回火处理, 抗变形。
- 采用激光管与龙门同步移动的飞行光路, 有效提高激光功效; 超大的激光加工幅面, 适用于大规模批量生产。配备大功率激光管, 可一次切割厚度为 30mm 的亚克力板。
- 使用 USB 端口数据接口, 并配有内置大容量存储器, 大大提高工作速度和效率。
- 支持多种文件格式: CDR、DXF、PLT、AI、BMP、DST、JPG 等格式。

Machine Features:

- Integrated full steel body, low temperature tempering treatment, reduce the deformation rate;
- Adopt flying ray with spontaneous movement of laser tube and gantry, effectively improve the laser efficiency;
- Super large laser processing format, suitable for large scale of mass production;
- Equipped with high power laser tube, it can cut thickness of 30 mm acrylic plate;
- It uses USB put data interface with large mass storage device to provide high working speed and efficiency;
- Support kind of formats: CDR, DXF, PLT, AI, BMP, DST, JPG and other formats.

应用领域:

- 本类型机器适用于服装、皮革、布制玩具、电脑绣花裁剪、模型、工艺品、竹木制品、广告装饰、建筑装潢、包装印刷、纸制品等行业。
- 橡胶、塑料、布料、皮革、毛料、水晶、有机玻璃、瓷砖、玉石、竹制品、木制品。

Application:

- Garment, leather, cloth toys, computer embroidery cutting, mould, crafts, bamboo and wood, advertising and building decoration, packaging and printing, paper and products, etc.
- Rubber, plastic, cloth, leather, woollens, crystal, organic glass, tile, jade, bamboo and wooden products, etc.



技术参数 / Technical Parameters

型号 / Model	STL1325A	加工尺寸 / working area	1300X2500mm
功率 / Laser power		100W/120W/150W/180W	
分辨率 / Resolution Ratio	< 0.025	最小切割文字尺寸 Min. cutting size	中文 (chinese) 1.5mm 英文 (english) 0.8mm
定位精度 / Positioning accuracy	0.1mm	重复定位精度 / Repositioning accuracy	< 0.1mm
软件 / Software support	AutoCAD/Type3/Coreldraw, etc		工作电压 / Power supply 220V/1Ph/50Hz

STL1325AM

金属非金属混合切割机 LASER METAL AND NON-METAL CUTTING MACHINE

机器特点:

- 机器的混合切割能力: 针对不锈钢、碳钢、亚克力、及木板都可进行切割。
- 机器的高精度: XY 雷赛简易伺服, 配合高精度皮带传送, 大大的提高了设备响应速度及切割精度, 延长了产品使用寿命。
- 稳定性好: 优化数控系统控制, 可满足精密零件加工, 且动态性能稳定, 可持续长时间工作。
- 切割断面质量好: 采用机械随动切割头系统, 切割头随板材高低随动, 切割点位置始终保持不变, 使切缝平整、光滑, 断面无需后序处理, 适应平面或曲面板材切割。
- 本激光机采用的是封离式 CO2 激光器, 使用主要耗材为电能、冷却水、辅助气体和激光灯。
- 本激光机结构简洁, 操作方便, 激光器运行稳定, 维护费用低。

Machine Features:

- Mixed-cut: metal steel such as stainless steel, carbon steel, and non-metal such as acrylic, wood, etc.
- High precision: XY axis adopt Leadshine servo motor within precision belt transmission improve the response speed and cutting precision, extend the time of using.
- Good stability: optimized the nc system control, it can meet the precision parts processing, stable dynamic performance, also can work for long hours.
- The cutting section with good quality: mechanical follow-up cutting head system, cutting head always follows the material keep the cutting point location unchanged, which insures smooth cutting section without processing again. it can adopt to flat or curved surface sheet cutting.
- Adopt sealed co2 laser tube, main consumable items are electric energy, auxiliary gas, and laser light.
- Simple structure, easy operation, stable laser tube, lower maintenance fees.

应用领域:

- 主要应用于广告行业, 钣金行业, 包装行业等切割。
- 亚克力、不锈钢、碳钢、密度板、模板等。

Application:

- Mainly used for advertising industry, sheet metal industry, package industry and so on.
- Acrylic, stainless steel, carbon steel, MDF, die board, etc.



技术参数 / Technical Parameters

型号 / Model	STL1325AM	加工尺寸 / working area	1300X2500mm
功率 / Laser power	100W/120W/150W/180W		
分辨率 / Resolution Ratio	< 0.025	最小切割文字尺寸 Min. cutting size	中文 (chinese) 1.5mm 英文 (english) 0.8mm
定位精度 / Positioning accuracy	0.1mm	重复定位精度 / Repositioning accuracy	< 0.1mm
软件 / Software support	AutoCAD/Type3/Coreldraw, etc	工作电压 / Power supply	220V/1Ph/50Hz

STL1309P

激光雕刻切割机 LASER ENGRAVING AND CUTTING MACHINE

机器特点:

- 采用国际最先进的 DSP 控制技术, 速度快, 操作简单。
- 使用 USB 端口数据接口, 并配有内置大容量存储器, 大大提高工作速度和效率。
- 支持多种文件格式: CDR、DXF、PLT、AI、BMP、DST、JPG 等格式。

Machine Features:

- The most advanced DSP controlling technology, high speed, easy operation.
- It uses USB put data interface with large mass storage device to provide high working speed and efficiency.
- Support kind of formats: CDR, DXF, PLT, AI, BMP, DST, JPG and other formats.



应用领域:

- 本类型机器适用于服装、皮革、布制玩具、电脑绣花裁剪、模型、工艺品、竹木制品、广告装饰、建筑装潢、包装印刷、纸制品等行业。
- 橡胶、塑料、布料、皮革、毛料、水晶、有机玻璃、瓷砖、玉石、竹制品、木制品。

Application:

- Garment, leather, cloth toys, computer embroidery cutting, mould, crafts, bamboo and wood, advertising and building decoration, packaging and printing, paper and products, etc.
- Rubber, plastic, cloth, leather, woollens, crystal, organic glass, tile, jade, bamboo and wooden products, etc.

技术参数 / Technical Parameters

型号 / Model	STL9060P	STL1309P	STL1410P	STL1610P
加工尺寸 / working area	600 X 900mm	1300 X 900mm	1400 X 1000mm	1600 X 1000mm
功率 / Laser power	80W/100W/120W/150W/180W			
分辨率 / Resolution Ratio	< 0.025	定位精度 Positioning accuracy		0.1mm
最小切割文字尺寸 Min. cutting size	中文 (chinese) 1.5mm 英文 (english) 0.8mm	重复定位精度 / Repositioning accuracy		< 0.1mm
软件 / Software support	AutoCAD/Type3/Coreldraw, etc	工作电压 / Power supply		220V/1Ph/50Hz

ST20FD

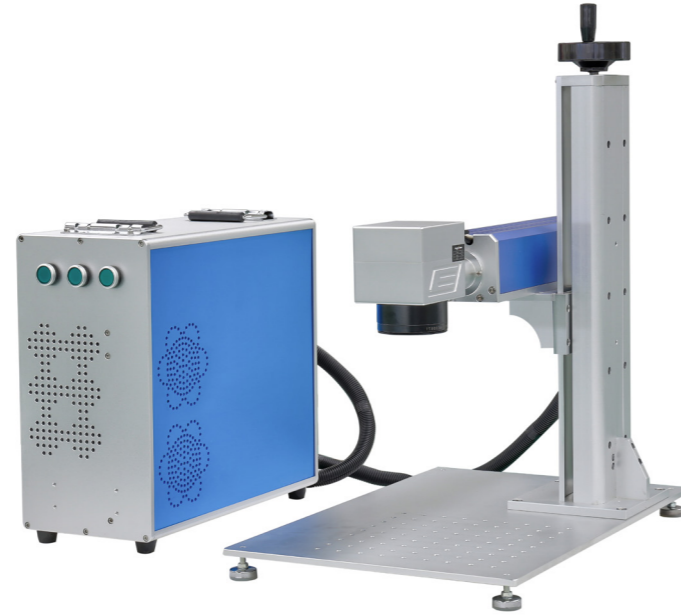
光纤打标机 FIBER MARKING MACHINE

机器特点:

- 速度快, 配合高速振镜。
- 体积小, 重量轻。
- 无耗材, 低耗电, 功耗小于 500W。
- 完全风冷, 不需要水冷机, 能耗降低。

Machine Features:

- High speed with galvanometer.
- Small volume, light weight.
- Low power, consumption power is less than 500w.
- Completely air cooling, low energy.



应用领域:

- 银饰品、卫生洁具、食品包装、烟草饮品、药品包装、医疗器械、眼镜钟表、汽车配件、电子五金。
- 适用材料: 金银、不锈钢、陶瓷、塑料、玻璃、石材、皮革、布料、竹木等。
- 适用行业: 汽车配件打标, 烟草打标, 啤酒打标, 戒指打标, 电子产品打标。

Application:

- Gold & silver jewellery, sanitary ware, food packing, tobacco products, medicine packing, medical apparatus and instruments, watches & glassware, auto accessories, electronic hardware.
- Applicable materials: gold & silver, stainless steel, ceramic, plastic, glass, stone, leather, cloth, bamboo and so on.
- Auto accessories marking, tobacco products marking, beer bottle marking, ring marking, electronic products marking.

技术参数 / Technical Parameters

型号 / Model	ST20FD	ST30FD	ST50FD
加工尺寸 / working area	100x100mm/200x200mm/300x300mm		
功率 / Power	Raycus 20W (Option: Max, IPG)	Raycus 20W (Option: Max, IPG)	Raycus 20W (Option: Max, IPG)
雕刻深度 / Marking Depth	≤ 1.2mm		
雕刻速度 / Marking speed	≤ 12000mm/s		
最小线宽 / Min. Line width	0.01mm		
最小字符 / Min.Character	0.05mm		
工作电压 / Power supply	220V/1Ph/50Hz		

ST1325A

标准型木工雕刻机 STANDARD TYPE WOODWORKING CNC ROUTER

机器特点:

- 工业级控制系统一键式操作, 高效无忧。可兼容 Type3, Artcam, Alphacam, 文泰, 精雕等多种软件。
- 高硬度 PVC 工程塑料台面。
- 电主轴采用高速轴承技术, 转速高、噪声低、功率大、响应快, 动力性能以及稳定性足以满足高速加工的需求。
- 低压电器部件均为国内外专业品牌, 比如施耐德、ABB、霍尼韦尔、欧姆龙、SMC、正泰、德力西等。

Machine Features:

- Industrial control system, easy one button operation, high efficient. It can be compatible with Type3, Artcam, Alphacam, ARTCUT JD Paint etc.
- High hardness table with PVC engineering-plastics.
- Our electric spindle adopt High-speed bearing technology, With high Rotational speed, Low noise large power, Fast response Dynamic performance and stability. To meet the high speed work.
- Low voltage electrical components is the top brand of the international and inland, for example, ABB, Honeywell, Omron, AMC, CHNT, DELIXI.

应用领域:

- 木材业: 可以处理柜, 实木门, 实木, 板式, 窗, 桌, 椅等。
- 装饰业: 屏幕, 波浪板, 大型悬挂物, 广告牌, 标志。
- 工艺品业: 人造石, 木, 竹, 大理石, 亚克力, 双色板。

Application:

- Wood: can process cabinet, wood door, solid wood, plate-type, windows, table, chairs, etc.
- Decoration: screen, wave plate, huge-scale hanging, advertisement plates, markings making.
- Arts: can engrave on man-made stone, wood, bamboo, marble, acrylic, double-colored board beautiful drawings and letters.



技术参数 / Technical Parameters

型号 / Model	ST1325A	ST1530A	ST2030A
加工尺寸 / working area	1300x2500x200mm	1500x3000x200mm	2000x3000x200mm
主轴功率 / Spindle power	3.5kw 风冷主轴 / 3.5kw air cooling (Option: 4.5kw, 5.5kw water or air)	驱动系统 / Drive system	步进 / Stepper motor
导轨 / Guide	台湾上银 / 银泰 HIWIN / PMI (Taiwan)	控制系统 / Control system	锐志天宏 / DSP A11 (Option: NC studio, march 3)
最大空行速度 / Max Running speed	30000mm/min	最大加工速度 / Max working speed	15000mm/min
加工精度 / Working accuracy	±0.05	重复定位精度 / Repositioning accuracy	±0.02
工作电压 / Power supply	380V/3Ph/50Hz	毛重 / G.W.	1200Kg

ST1325D/T

2/3工序木工雕刻机

2/3 PRODUCTION WOODWORKING MACHINE

机器特点:

- 床身采用工业焊接技术, 淬火处理后经高精度龙门铣加工, 确保机器的刚性和床身的几何精度。
- 专业正版控制系统, 可兼容 Tpye3、Arcam、Proe、Ug 等多种 CAD/CAM 软件。
- Z 轴采用台湾 TBI 滚珠丝杆和 PMI 直线导轨, 可确保加工精度
- 双 / 三工序, 各主轴可实现相互切换, 提高工作效率;
- Y 轴采用双电机驱动, 大扭矩的驱动系统, 在高负载加工环境下也可以轻松自如

Machine Features:

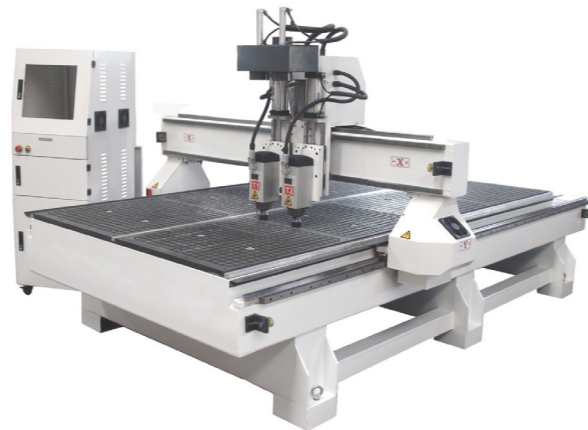
- Industrialized welded machine structure, quenching by dragon gatemilling machining high precision, ensure high rigidity and high accuracy.
- Professional genuine controlling system, our software is compatible with Tpye3, Artcam, Proe, Ug and CAD/CAM software.
- Z axis with imported Taiwan TBI rolling ball screw and PMI linear rail can be ensure the machining accuracy.
- Two/three processes, the main spindle can realize the mutual switching, improve work efficiency.
- Y axis with dual motor drive, the drive system of large torque, High load under the processing environment can also be easily.

应用领域:

- 适用板式家具、实木家具、电子产业、广告装饰、音响乐器、软包、幕墙等。
- 木质材料、有机玻璃、抗倍特板、人造石、环氧树脂、PVC、ABS、铜、铝、保丽龙等。

Application:

- Panel furniture, solid wood furniture, electronics industry, advertising decoration, sound box, speakers musical instruments, soft bag, walls,ect.
- Wood, plexiglass, anti-special board, artificial stone, epoxy resin,PVC, ABC, copper and aluminum.



技术参数 / Technical Parameters

型号 /Model	ST1325D/T	ST1530D/T	ST2030D/T
加工尺寸 /working area	1300x2500x200mm	1500x3000x200mm	2000x3000x200mm
主轴功率 /Spindle power	3.5/4.5/6.0Kw(options)	传动方式 /Transmission	XY Skew gear/Z Ball screw
导轨 /Guide	台湾上银 / 银泰 HIWIN/ PMI(Taiwan)	控制系统 /Control system	PM95A-3L(nc53c)
最大空行速度 /Max Running speed	40000mm/min	最大加工速度 /Max working speed	25000mm/min
加工精度 /Working accuracy	±0.05	重复定位精度 /Repositioning accuracy	±0.02
工作电压 /Power supply	380V/3Ph/50Hz	毛重 /G.W.	1500Kg

ST1325ATCL

自动换刀雕刻机

AUTOMATIC TOOL CHANGING CNC ROUTER

机器特点:

- 意大利“HSD” 9.0KW 风冷式自动换刀主轴, 可承受高转速、重负荷、低噪音等特性。
- 高刚性重型结构设计, 经回火应力消除处理。
- X、Y 轴采用高精度进口齿条, Z 轴采用高精度进口研磨级滚珠丝杠。
- 高速位移可达 40m/Min, 最大加工速度为 25m/Min。
- 排式刀库系统, 可缩短刀具更换时间。

Machine Features:

- Air-cooling Italy HSD brand spindle with automatic tool change has the features of undertaking the high speed, heavy duty, low noise etc .
- Robust square steel tube of body structure, solid without deformation, wholly scientific welding, more stability.
- X Y-Axis with imported high-precision rack, Z- axis with imported high-precision grinding grade ball screw.
- High speed transmission is up to 40m/min and the max processing speed is 25m/min.
- Linear knives system with shorter tool-changing time.

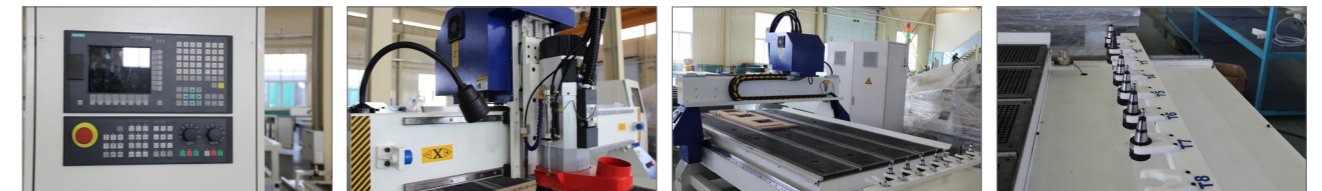


应用领域:

- 适合木材、亚克力、铝、铜、铝塑板、塑料、及碳纤维复合材料的雕铣切削, 广泛应用于软金属及板材加工领域等。

Application:

- Suitable for wood, acrylic, aluminum, copper, aluminum, plastic, and carbon fiber composite materials,carving and milling, widely used in soft metal and sheet metal processing areas.



技术参数 / Technical Parameters

型号 /Model	ST1325ATCL	ST1530ATCL	ST2030ATCL
加工尺寸 /working area	1300x2500x200mm	1500x3000x200mm	2000x3000x200mm
主轴功率 /Spindle power	HSD 9.0kw ISO 30	驱动系统 /Drive system	YASKAWA Servo motor
导轨 /Guide	台湾上银 / 银泰 HIWIN/ PMI(Taiwan)	控制系统 /Control system	SYNTEC 6MA
最大空行速度 /Max Running speed	40000mm/min	最大加工速度 /Max working speed	25000mm/min
加工精度 /Working accuracy	±0.05	重复定位精度 /Repositioning accuracy	±0.02
工作电压 /Power supply	380V/3Ph/50Hz	毛重 /G.W.	1600Kg

ST1530-4A

4轴数控加工中心 4 AXIS CNC ROUTER

机器特点:

- 采用意大利高速电主轴, 主轴最高转速达 10000RPM (泡沫)、24000 (木模), 保证加工效率的最优化
- 主轴可左右旋转 $\pm 90^\circ$

Machine Features:

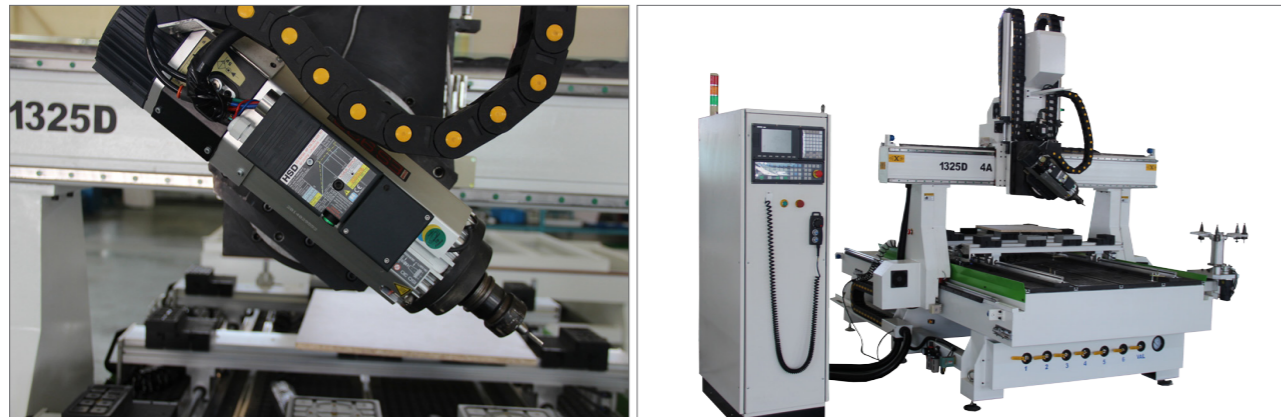
- Adopting Italian high-speed electric spindle, the maximum spindle speed is 10000RPM (foam) and 24000 (wood mold) to ensure the optimization of machining efficiency.
- Pendulum Spindle Movement: $\pm 90^\circ$.

应用领域:

- 泡沫加工, 模型加工。
- 木材, 泡沫等材料。

Application:

- Foam processing, Model processing etc.
- Wood, foam, etc.



技术参数 / Technical Parameters

Model	ST1530-4A
Traveling Size	3000*1500*600mm
Transmission	X/Y rack and pinion drive, Z ball screw drive
Traveling Speed	≥ 45000 mm/min
Working Speed	≥ 20000 mm/min
Spindle Power	HSD 9 kw ATC spindle
Spindle Speed	24000r/min
Driving System	Yaskawa
Controller	Syntec/Osai

ST1530-5A

5轴数控加工中心 5 AXIS CNC ROUTER

机器特点:

- 采用欧赛控制系统, 台湾 Hiwin 方轨, 安川伺服电机和驱动器, 意大利主轴。
- Z 轴可加高到 1.2 米, 非常适用于加工超厚的 3D 材料。

Machine Features:

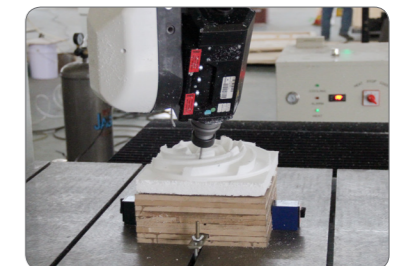
- With OSAI numerical control system, HIWIN square guide, Yaskawa servo motor and driver, HSD spindle, the machine is of high speed and high machining accuracy.
- Z axis travel can be heightened to 1.2 meters, so it is very suitable for processing large-scale three dimensional surface, special for cars model.

应用领域:

- 各种大型非金属模具, 特别适合汽车泡沫模具, 木质船模, 航空木模, 铁路木模, 列车木模的制作。
- 大型仪器的三维表面雕刻和形状切割。
- 木材, EPS, 树脂, 石膏, 其他非金属碳混合物, 石材人造石, 石墨, PVC 等。

Application:

- Various large metalloid moulds, especially suitable for automotive foam mold, wooden ship model, aviation wooden mold, rail wooden mold and train wooden mold.
- 3D surface engraving and shape cutting of large-scale instruments.
- Wood, EPS, resin, plaster, other non-metal carbon mixed compound, stone artificial stone, graphite, PVC, etc.



技术参数 / Technical Parameters

Model	ST1530-5A
Traveling Size	3000*1500*500mm
Transmission	X/Y rack and pinion drive, Z ball screw drive
Traveling Speed	≥ 45000 mm/min
Working Speed	≥ 20000 mm/min
Spindle Power	HSD 9 kw ATC spindle
A/C Axis	A: $\pm 185^\circ$ C: $\pm 320^\circ$
Spindle Speed	24000r/min
Driving System	Yaskawa
Controller	Syntec/Osai

ST1325N

数控排钻开料中心 NESTING(WITH AUTOMATIC ATC)

机器特点:

- 自动上料、优化开料、打垂直孔、自动下料一气呵成，工序无间断，提高效率产出。
- 机器控制界面设计人性化，傻瓜式操作，操作员经简单培训即可上岗，无需技术工人，机器动作，敏捷迅速，效率高，帮您提高产能。
- 该产品采用大功率自动换刀主轴、伺服驱动系统和行星减速机能稳定。
- 台面为真空吸附台面，可强力吸附不同面积的材料。



Machine Features:

- Highly automated nesting solution with automatic loading and unloading system. The complete work cycle of loading, nesting, drilling and unloading is carried out automatically, which results in maximum productivity and zero down time.
- World's first class components--Italian high-frequency electric spindle, controller system and drill bank, German helical rack and pinion drives, Japanese self-lubricating and dust-proof square linear guides and high precision planetary gear reducers, etc.
- Truly versatile--nesting, routing, vertical drilling and engraving all in one. It is well-suited for panel furniture, office furniture, cabinets production.

应用领域:

- 板式家具，橱柜衣柜，办公家具，定制家具。

Application:

- Wooden door, cabinet, panel furniture, closet, etc. Suitable for standard or bespoke production.



技术参数 / Technical Parameters

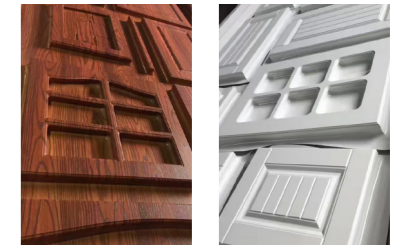
Model	ST1325N
Traveling Size	1300*2500*200mm
Transmission	X/Y rack and pinion drive, Z ball screw drive
Traveling Speed	≥45000mm/min
Working Speed	≥25000mm/min
Spindle Power	HSD 9 kw ATC spindle
Spindle Speed	24000r/min
Driving System	Yaskawa
Controller	Syntec

STM2480B

真空覆膜机 VACUUM PRESS MEMBRANE MACHINE ST

机器特点:

- 设备架采用优质钢材焊接而成。严格计算承受力点。无需加固，稳定性高。
- 真空泵选用德国著名品牌和国产直通式真空泵，采用德国技术，噪音低，无污染，使用寿命长。
- 加热系统采用微电脑温度控制器，可根据温度变化进行自动控制，调节加热速度，准确控制温度。
- 提供丰富的可选设备，可扩展设备的性能和便利性。

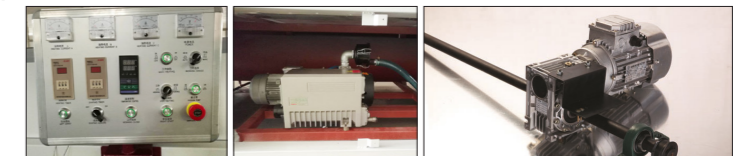


Machine Features:

- The equipment frame is welded with quality steel materials. The force-bearing points are strictly calculated. Without reinforcement high stability.
- The vacuum pump select Germany famous branded and domestic straight-through vacuum pump which adopt Germany technology with low noise, no pollution and long service life.
- The heating system uses a micro-computer temperature controller, which can achieve automatic control according to temperature changes to adjust the heating speed so as to control the temperature accurately.
- A wealth of optional devices is available which can extend the performance functions and convenience of equipment.

应用领域:

- PVC贴覆式家具 音箱 橱柜 工艺门 装饰墙裙。



Application:

- This machine can be used to paste PVC, ABS, etc film on furniture, cabinets, loudspeakers, relief doors, decoration panels for walls and other abnormal decoration shapes with a special silicon sheet.



技术参数 / Technical Parameters

Technical Specifications	
Exterior size	5800(Double plate 8800) mm×1500 mm×1400mm
Working plate inner size	2550mm×1150(1300)mm (If producing the door, you choose 1150mm; if producing cabinet, you choose 1300mm)
Maximum height of the work piece	50mm(including height of Magnetic block or bottom plate)
Rating working pressure	≥-0.095Mpa
General Power	about 25kw
Actual power consumption	about 6-7kw
Weight	2.5T
Top temperature	About 200℃
Machine size	8800 mm×1500 mm×1400mm

ST1325S

石材雕刻机 STONE CNC ROUTER

机器特点:

- 整体加厚方管钢结构床身, 坚固不变形, 科学整体焊接, 稳定性高。
- 采用台湾 PMI 直线导轨, 承载力强, 速度快, 运行平稳, 精度高, 寿命长。
- Z 轴采用高精度进口滚珠丝杆, 下刀精准, Y 轴采用高性能双齿条传动, 速度快, 力量大。
- 恒功率主轴电机, 切削力大, 效率高。
- 软件兼容性好, 可兼容 Type3/Artcam/Casmate/Proe/UG/ 文泰等多种 CAD/CAM 软件。

Machine Features:

- Robust square steel tube of body structure, solid without deformation, more stable.
- Adopt imported linear guide rail, strong bearing capability, rapid speed, stable operation, higher precision, long life time.
- Z axis adopts imported high precision rolling ball screw, precise tool setting.
- Constant power spindle motor with large cutting capability and high efficiency.
- Fine software compatibility compatible of Type3, Artcam, Casmate, Artcut and other CAD and CAM designing softwares.

应用领域:

- 适用于石材业、石碑加工、艺术浮雕、广告业、装饰装潢业、陶瓷业。
- 大理石、花岗岩、玉石、青石、黑石、陶瓷等各种石材。

Application:

- Stone industry, stela processing industry, art relief industry, advertising industry, decoration industry and ceramic industry etc.
- Marble, granite, jade, blue-stone, black stone, ceramics etc.



技术参数 / Technical Parameters

型号 / Model	ST1325S	ST1530S	ST2030S
加工尺寸 / working area	1300x2500x200mm	1500x3000x200mm	2000x3000x200mm
主轴功率 / Spindle power	5.5KW/6KW/7KW		
导轨 / Guide	台湾上银 / 银泰 HIWIN/PMI(Taiwan)		
最大空行速度 / Max Running speed	30000mm/min	最大加工速度 / Max working speed	25000mm/min
加工精度 / Working accuracy	±0.05	重复定位精度 / Repositioning accuracy	±0.02
工作电压 / Power supply	380V/3Ph/50Hz	毛重 / G.W.	1100Kg

ST1020H

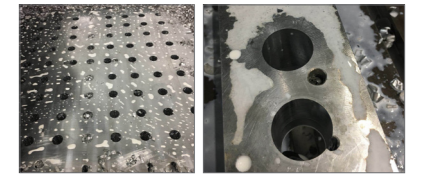
数控龙门钻铣床 CNC GANTRY TYPE MILLING MACHINE

机器特点:

- 机床加工过程数字控制, 操作十分方便。能实现自动化、高精度、多品种、大批量生产。
- 龙门数控钻床机床采用床身工作台固定, 龙门移动的形式。
- 动力头主轴采用精密主轴, 主轴电机驱动, 可根据需要无级调速。

Machine Features:

- Digital control system, easy control. It can realize automation, high precision, multi-variety and mass production.
- Milling machine with gantry moving and worktable fixed design.
- The power head spindle adopts a precision spindle, which is driven by motor and can be step-less regulated as needed.



应用领域:

- 钻铣床主要用于板 / 结构件类零件的钻孔、倒角、攻丝、轻铣。
- 数控龙门钻铣床系列主要用于平板、法兰、盘类、环件等厚度在有效范围内工件的高效钻孔加工。可在单质材料零件及复合材料上实现钻通孔、盲孔。

Application:

- Mainly used for milling and boring, chamfer, tapping, Micro-milling.
- Gantry type milling machine mainly used for drilling process with high efficiency on plate, flange, disk, ring, etc. Gantry type milling machine can bore and blind-drill on the single elements parts and composite material parts.

技术参数 / Technical Parameters

Model		ST-1020H
Working size	L×W (mm)	2000*1000
	Z (mm)	220
	Qu-ty(pcs)	1
Vertical ram type drilling power head	Spindle holder size	BT40
	Diameter of drill (mm)	Φ3-Φ37
	Diameter of tapping (mm)	M3-M18
	Spindle speed (r/min)	0-6000
	Servo motor power for spindle (kw)	5.5
	Distance from the end of spindle to worktable (mm)	200-600mm
X axis	Max travel (mm)	1000
	Move speed (m/min)	0~9
	Servo motor power (kw)	2.4*1
Y axis	Max travel (mm)	2000
	Move speed (m/min)	0~9
	Servo motor power (kw)	2.4*1
Z axis	Max travel (mm)	400
	Move speed (m/min)	0~8
	Servo motor power (kw)	2.4*1
Tool magazine	Linear tool magazine at the end of machine (pcs)	13
Machine package size	LxWxH (mm)	3500*1900*2000
	G.W.(T)	5.25T