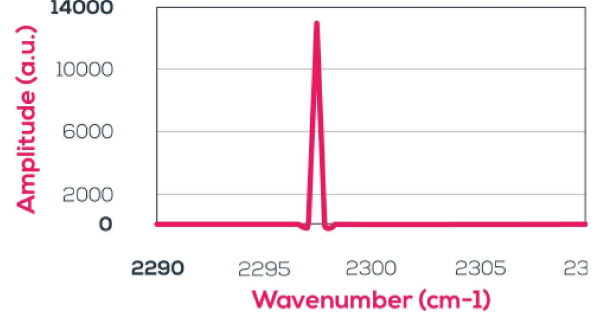




mirSense uses the well-known Distributed Feedback (DFB) (http://mirsense.com/qcl-core-technology/) effect to achieve single frequency sources. Furthermore, our products rely on our strong experience (since 2000) and a unique and patented approach. Our technology uses top metal grating to provide the feedback in the cavity. Top metal gratings allow versatility, reproducibility and stability in wavelengths.

uniMir devices can be delivered with standard butterfly or HHL packages on demand. Both packages have integrated thermistance and a Peltier element for the thermal regulation of the laser. Collimated beams are also proposed for an easier integration in your optical system.



Flyer (<http://mirsense.com/content/uploads/2018/02/Enterprise-Products-mirSense-uniMir-2018.pdf>)

Ask for more information  
(<http://mirsense.com/contact/>)

Discover our DFB Lasers Catalog :

Wavelength Range (cm-1)	Mode	Average Power	Gas	Availability
-------------------------	------	---------------	-----	--------------

1090-1180	QCW (i.e : pulsed)	<5mW	Amonia (NH3)	available
1272-1305	QCW	<5mW	Nitrous Oxide (N2O)	available
1315-1380	QCW	<5mW	Methane (CH4)	available
1344-1356	CW	<5mW	Methane (CH4)	available
1396-1402	QCW	<5mW	Sulfur trioxide (SO3)	available
1622-1650	QCW	<5mW		available
1726-1795	CW	>60mW	Formaldehyde (H2CO), Water (H2O)	available
1746-1825	QCW	<10mW	Formaldehyde (H2CO), Water (H2O)	available
1855-1945	QCW	<5mW	Nitric Oxide (NO)	available
1955-1976	CW	<5mW		available
2180-2392	QCW	<5mW	Carbon dioxide (CO2)	available
2222-2259	CW	5mW- 10mW	Carbon monoxide (CO)	available
2269-2312	CW	5mW- 10mW		available

For a quote or more information, please contact us.

If you don't find your wavelength, do not hesitate to ask us. mirSenses provides "tailor-made" QCL with short lead time and no Development fees !

Contact us (<http://mirsense.com/contact/>) 

> COMPANY



> PRODUCTS ([HTTP://MIRSENSE.COM/PRODUCTS/](http://mirsense.com/products/))

> TECHNOLOGY

> APPLICATIONS

> CONTACT ([HTTP://MIRSENSE.COM/CONTACT/](http://mirsense.com/contact/))

**Palaiseau Headquarters**

Centre d'intégration NanoINNOV

Bâtiment 863

8 avenue de la Vauve

F-91120 Palaiseau

Phone : +33 1 69 08 05 90