

# Newly Upgraded Backpack Laser Cleaning Machine





On-line cleaning



Bluetooth or screen control



Compact size



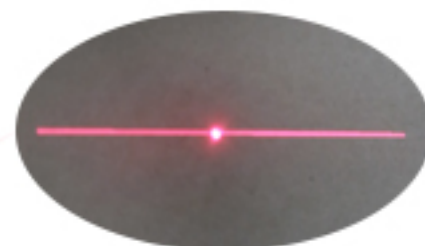
Portability

# Product Features

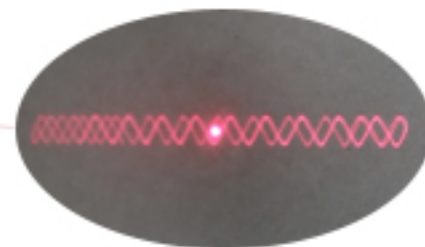
backpack

1

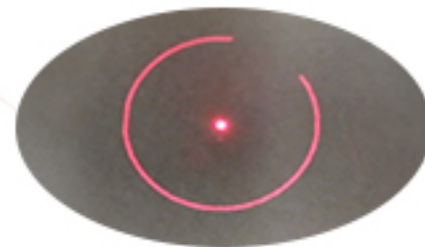
Dual optic beam, with 3 cleaning mode, linear, wave and circle scanning. Cleaning speed is faster and effect better.



Linear scanning



Wave scanning



Circle scanning



2  
backpack

Auto focus function, enabling to adjust to the right focal length more quickly.

### backpack 3

Aluminum alloy case, less weight,  
more fashion and durable.



backpack**4**

Panel and App Control



Optional

100W, 150W are optional.

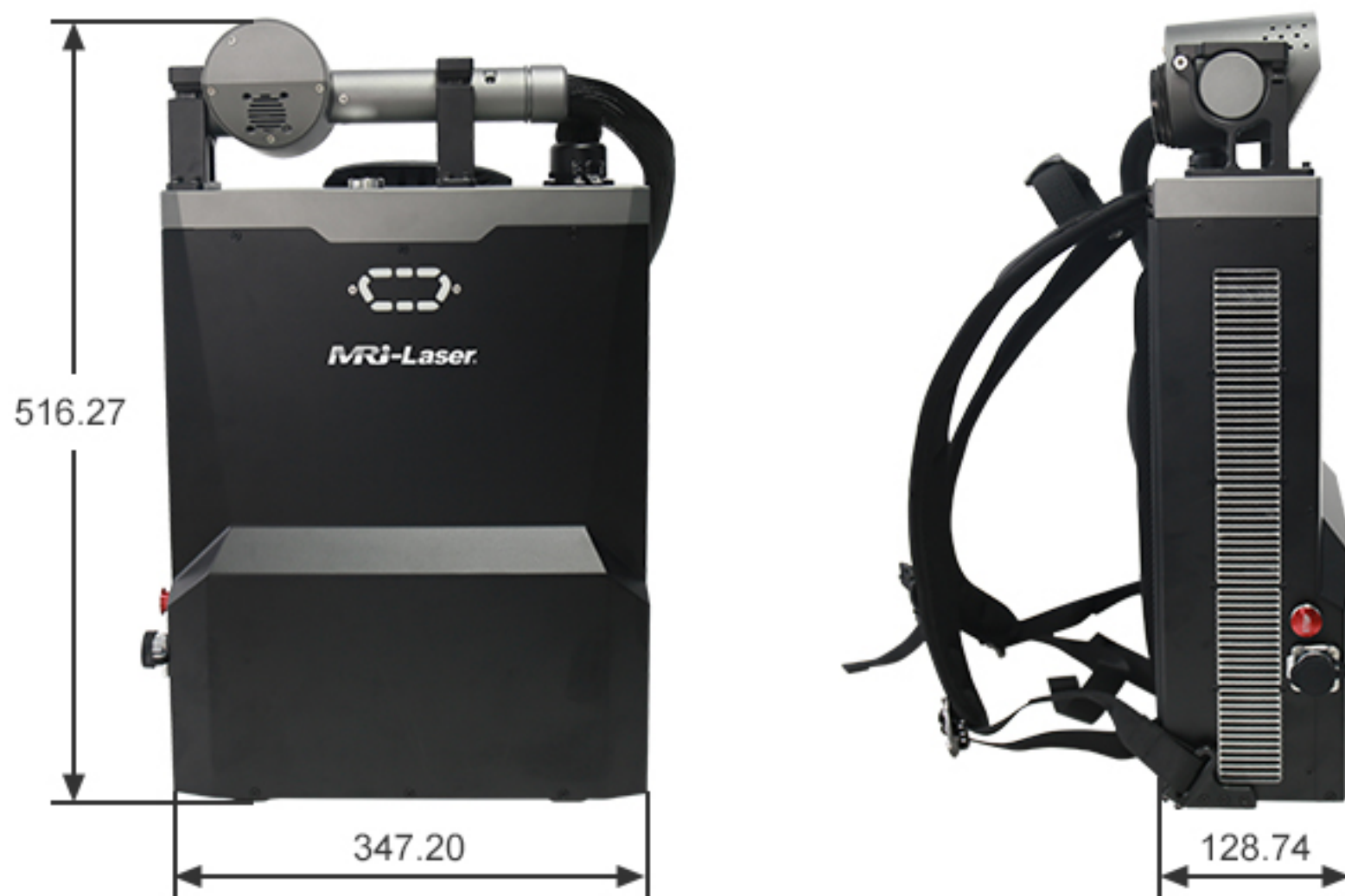
Customized

The case color can be customized.



# Product Information

Unit: mm



## Technical Parameter

Model	MRJ-FL-C100BP / MRJ-FL-C150BP
Laser power	100W / 150W
Laser type	1064nm, pulsed fiber laser
Single pulse energy	1.5 mj
Power supply	100-240V AC power supply
Cooling method	Air cooling
Main host weight	14.3±0.1 kg
Clean head weight	1.1±0.15 kg
Main host size	347.20 x 128.74 x 516.27 mm
Transmission fiber	Industrial grade wrapped 1.5m transmission fiber (length optional)
Operating ambient temperature	10~40 °C
Operation control	Control system via Bluetooth connection, suitable for Android smart phones
Power supply voltage	100-220V AC
Power supply	100W cleaning machine ≤ 500W
Working temperature	10~40 °C
Storage temperature	-10~60 °C
Working environment humidity	<95%



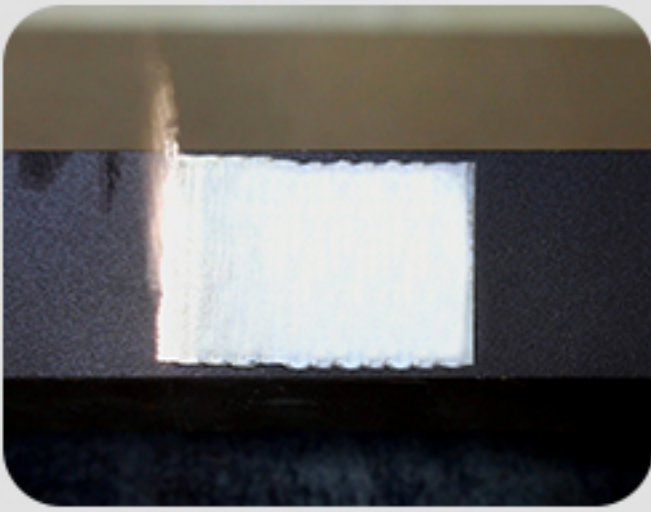
# Application Fields



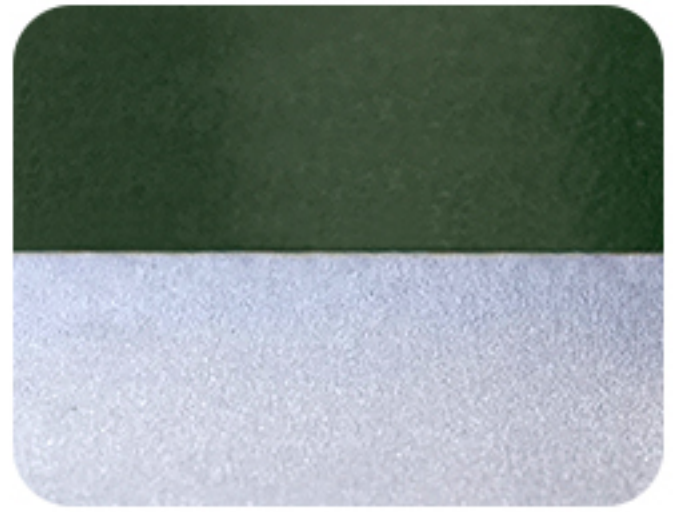
Due to its portability, multi-function, simple operation, it is mainly applied on outdoor cleaning work, especially for tower, construction and other high places.

# Sample Display

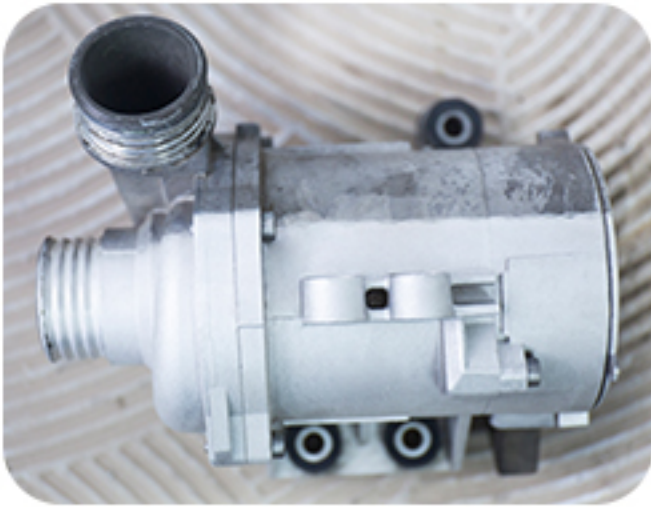
Coating Removal



Paint Removal



Oxides Removal



Oil Stain Removal



Rust Removal



Weld Seam Removal



Stone Removal



Rubber Removal

