

# SOLID STATE LASER - 1064nm

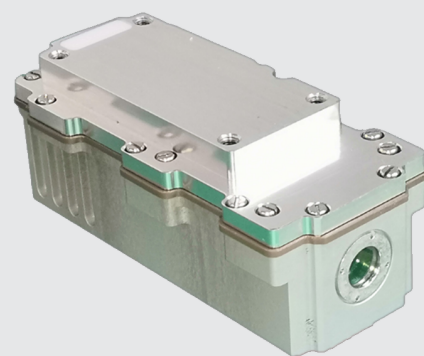
## Features :

- High precision photoelectric Q switching
- Multi-variable frequency module is optional
- Portable design for easy system integration
- Full air cooling, long operating life
- Controllable energy output
- Divergence Angle customized output

## Applications :

- Research
- Laser Irradiation
- LIDAR
- Pump Source
- Laser Illumination

LSP-SL-1064



PARAMETERS	LSP-SL-1064-20-01	LSP-SL-1064-40-01	LSP-SL-1064-60-01
Wavelength		1060nm±10nm	
Average energy	≥20mJ	≥40mJ	≥60mJ
Pulse width		15ns±5ns	
Frequency range		5Hz ~ 20Hz	
Beam circularity		> 80%	
Beam-divergence angle		≤3mrad	
Polarization		> 100:1	
Mean energy stability		RMS≤5%	
Beam pointing stability		<0.05mrad	
Working voltage		DC24V-32V	
Working temperature		-40℃ ~ 60℃	
Storage temperature		-50℃ ~ 70℃	
Refrigerating mode		Air	
Relative humidity		≤90%	
Weight	≤400g (fin exclusive)	≤900g (fin exclusive)	≤900g (fin exclusive)
Dimension		≤120mm*70mm*50mm (fin exclusive)	

PARAMETERS	LSP-SL-1064-80-01	LSP-SL-1064-100-01	LSP-SL-1064-150-01	LSP-SL-1064-200-01
Wavelength	1064nm±10nm			
Average energy	≥80mJ	≥100 mJ	≥150mJ	≥200mJ
Pulse width	15ns±5ns			
Frequency range	5Hz ~ 20Hz			
Beam circularity	> 80%			
Beam-divergence angle	≤ 3mrad			
Polarization	> 100:1			
Mean energy stability	RMS≤5%			
Beam pointing stability	<0.05 mrad			
Working voltage	DC24V-32V			
Working temperature	-40℃ ~ 60℃			
Storage temperature	-50℃ ~ 70℃			
Refrigerating mode	Air			
Relative humidity	≤90%			
Weight (fin exclusive)	≤900g	≤1000g	≤1200g	≤1200g
Dimension	≤160mm*70mm*50mm (fin exclusive)			

## NOTE

- 1.Power use: Ensure that it is used at the rated voltage and power.
2. The laser must be installed reliably when working.
3. Follow the LumiSpot Tech operating instruction manual.
4. For other questions, please contact us.
- 5.Electrostatic protection: the laser module in transport, storage, use must take appropriate anti-static measures.



# SOLID STATE LASER - 1064nm/1570nm

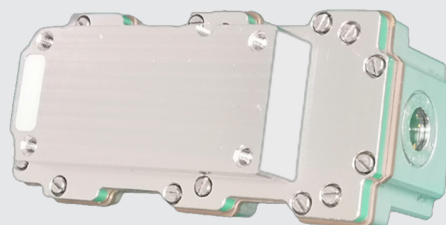
## Features :

- Dual wavelength free switching
- High precision photoelectric Q switching
- Multi-variable frequency module is optional
- Portable design for easy system integration
- Stable light output, high reliability, long operating life
- Energy output controllable, divergence Angle
- multi-harmonic wavelength are optional

## Applications :

- Laser Illumination
- Laser Irradiation
- LIDAR
- Pump Source
- Research

LSP-SL-1064-1570



PARAMETERS	LSP-SL-1064/1570-10-01	LSP-SL-1064/1570-20-01
Wavelength	1060nm±10nm/1570nm±7nm	
Average energy	≥10mJ	≥20mJ
Pulse width	15ns±5ns	
Frequency range	≤20Hz±0.1Hz	
Beam circularity	>80%	
Beam-divergence angle	≤3mrad	
Polarization	>100:1	
Mean energy stability	RMS≤5%	
Beam pointing stability	<0.05mrad	
Working voltage	DC24V-32V	
Working temperature	-40°C~ 60°C	
Storage temperature	-50°C ~ 70 °C	
Refrigerating mode	Air	
Relative humidity	≤80%	
Weight	≤1200 g (fin exclusive)	
Dimension	≤170mm*80mm*50mm (fin exclusive)	

## NOTE

- 1.Power use: Ensure that it is used at the rated voltage and power.
2. The laser must be installed reliably when working.
3. Follow the LumiSpot Tech operating instruction manual.
4. For other questions, please contact us.
- 5.Electrostatic protection: the laser module in transport, storage, use must take appropriate anti-static measures.

