



Diode-Pumped Solid-State CW Infrared Micro Laser



Home

Sitemap

My Account

My WishList

PRODUCTS

SUPPORT

COMPANY

CONTACTS

TRADE SHOWS

Quick search



Advanced products search →

Opto-Mechanical Products

Products

↓ OPTO-MECHANICAL PRODUCTS

- Optical Tables
- Brackets & Rails
- Base Mounts & Accessories
- Optical Mounts
- Optical Positioners
- Base Positioners
- Translation & Rotation Stages
- Motorized Positioners & Controllers
- Fine Adjustment Screws
- Opto-Mechanics
- Custom Engineering

→ VACUUM COMPATIBLE PRODUCTS

↓ OPTICS, LASERS & MEASUREMENT

- Optics
- Lasers & Laser Accessories
- Light Test & Measurement Instruments
- Spectroscopic Instruments
- Spectrographs & Monochromators

→ PRODUCT INDEX

→ PRODUCT SEARCH

→ NEW PRODUCTS

→ MY LINKS

→ MY WISHLIST

→ CATALOG REQUEST

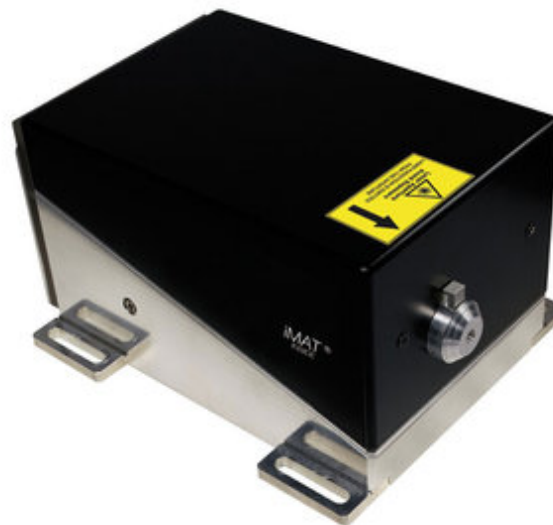
→ VIDEOS

→ SALE

Senza 1064 - Diode-Pumped Solid-State CW Infrared Micro Laser

Printable version

Datasheet



Zoom in

- 1064 nm output wavelength
- Highest Efficiency: ≥40% (output-/pump power)
- Low noise: < 0.3 % rms
- High beam quality ($M^2 < 1.05$)
- CW laser operation
- Single Frequency: intrinsic feature of optical layout, no mode hops
- Scalable Design
- Cost effective

Senza Near Infra Red (NIR, 1064 nm) laser is available in two models – with 500mW and 1W power output. Ultra low noise, single frequency laser light source is perfect for applications as versatile as NDT, Raman spectroscopy and fiber laser pumping.

For OEM customers who require wavelength locking or frequency tuning customized options are available (with the compact cavity design, frequency tuning over a 3GHz range is possible upon request).

Senza HP offers even higher power outputs reaching 2W, 3W and beyond. No water cooling, no mechanical vibrations only great stability and near perfect Gaussian beam profiles.

Wavelength locking and frequency tuning options are available upon request as are even higher powers for applications like exotic atom cooling.

My Account

User Name:

Password:

Model	Senza-1064-500 / -1000	Senza-1064-2000
-------	------------------------	-----------------

Remember login [login >>](#)[Restore password | Register account](#)**My WishList**

There are no products in the WishList.

- > [SUBMIT](#)
- > [INQUIRY](#)
- > [EDIT](#)
- > [WISHLIST](#)
- > [HELP](#)

Output wavelength	1064 nm	
Rated output power (CW)	500, 1000 mW	2000 W
Output beam diameter	0.7 mm (+/-0.2)	
Transverse mode structure	TEM ₀₀ , M ² <1.05	
Longitudinal mode structure	SLM (Single frequency)	
Divergence	Diffraction limited	
Beam pointing stability	≤ 10 μrad/°C	
Spectral linewidth	< 2 MHz	
Coherence length	> 100 m	
Polarization	Vertical	
Polarization ratio	≥ 100:1	
Output power noise (p-p)	≤ 2% (10 Hz - 2 MHz)	
Output power noise (rms)	≤ 0.3% (10 Hz - 2 MHz)	
Output power stability	≤ 2 % (4 hours)	
Thermal management	TEC conductively cooled. Recommend mounting on metal heat sink plate min	
Operating temperatures	15-35 °C	
Laser Head Dimensions (LxWxH)	160 x 109 x 98 mm	
Controller Dimensions (LxWxH)	164 x 109 x 45 mm	200 x 250 x 90 mm
Power adapter	Standard AC/DC converter, 12 VDC, 140 W max with Mini-DIN 4 power connector	EN60 320-1 Standard Sheet C14 Class I Cold Condition (Fused) Voltage: 80 - 264 VAC, 47 - 400 Hz

OEM Manufacturing services. Standa provides contract manufacturing services for application - specific Lasers. Please call your local Standa distributors or Standa office for more information.

Ordering Information**Model**Senza-1064-1000 Senza-1064-2000 → **STANDA** in Lithuania

STANDA P.O. BOX 377 ,
03012 Vilnius, Lithuania
Phone +370 5 2651474,
Fax +370 5 2651483
E-mail: sales@standa.LT

Senza-1064-500

1



Standa
→ in the
World



[Products](#) | [Support](#) | [Company](#) | [Contacts](#) | [Trade](#)

[Shows](#) |



Diode-Pumped Solid-State CW
Infrared Micro Laser
© 2000 - 2014 STANDA LTD. All
rights reserved.