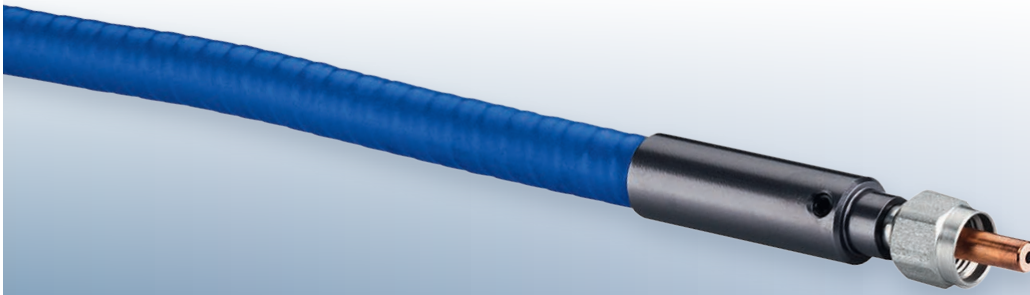


FiberTech® CuSMA laser cables



CLS□□□□IR08/08.0bl23/23-□□□□cm100

Description

Laser cable with F-SMA freestanding fiber connectors and PVC coated steel-armored protection tube. Copper based high-accuracy fiber ferrule for effective heat removal and high fiber centricity. Applicable for laser beam delivery of up to 400 W.

Properties / Composition

- VIS-IR all-silica (silica/silica) step-index fiber with NA = 0.22
NA = 0.12 on request
Graded-index fiber on request
- SMA905 (F-SMA) connector with free-standing fiber tip, hex nut
- Keyed SMA905 (F-SMA) connectors on request
- All copper alloy parts for improved heat removal
- Fiber centricity < 5 μm fiber core to ferrule
- Squarelock, blue PVC-coated protection tube
- Metal connector cuffs to cable
- Electrical isolation from end to end
- Average laser power up to 400 W

Fiber core Ø [μm]	Cable length [m]	Type designation	Order no.
100	2	CLS0100IR08/08.0bl23/23-0200cm100	FCL23-10200-2000
200		CLS0200IR08/08.0bl23/23-0200cm100	FCL23-20200-2000
400		CLS0400IR08/08.0bl23/23-0200cm100	FCL23-40200-2000
600		CLS0600IR08/08.0bl23/23-0200cm100	FCL23-60200-2000
800		CLS0800IR08/08.0bl23/23-0200cm100	FCL23-80200-2000
1000		CLS1000IR08/08.0bl23/23-0200cm100	FCL23-90200-2000
100	3	CLS0100IR08/08.0bl23/23-0300cm100	FCL23-10300-2000
200		CLS0200IR08/08.0bl23/23-0300cm100	FCL23-20300-2000
400		CLS0400IR08/08.0 bl23/23-0300cm100	FCL23-40300-2000
600		CLS0600IR08/08.0bl23/23-0300cm100	FCL23-60300-2000
800		CLS0800IR08/08.0bl23/23-0300cm100	FCL23-80300-2000
1000		CLS1000IR08/08.0bl23/23-0300cm100	FCL23-90300-2000
100	5	CLS0100IR08/08.0bl23/23-0500cm100	FCL23-10500-2000
200		CLS0200IR08/08.0bl23/23-0500cm100	FCL23-20500-2000
400		CLS0400IR08/08.0bl23/23-0500cm100	FCL23-40500-2000
600		CLS0600IR08/08.0bl23/23-0500cm100	FCL23-60500-2000
800		CLS0800IR08/08.0bl23/23-0500cm100	FCL23-80500-2000
1000		CLS1000IR08/08.0bl23/23-0500cm100	FCL23-90500-2000