

Modulo Line

Polishing

CCP modulo S

Next level polishing, intelligently combined



Fascination for Innovation



Introducing the CCP modulo S

CCP Modulo S is the latest generation of the proven and widespread CCP Modulo machine series. The high-quality two-lens polisher allows for polishing the widest range of curvatures in the market and is now even faster.

Its most modern process technology significantly boosts productivity. Tool handling and lens handling, lens cleaning and lens polishing – the multi-tasking pro is designed to run all these processes in parallel.

The process technology featuring long-life polishing pads as well as an innovative process design allows for significant savings in costs per lens.

Modulo Line

SCHNEIDER had the vision to manufacture individual lenses based on freely definable mathematical descriptions. The HSC generators and CCP polishers have become the tools used to develop the freeform idea in the ophthalmic industry. Individual freeform lenses are now the top product in the market, and SCHNEIDER has grown to be the premier manufacturer of freeform equipment worldwide. The innovative machines have also made their way into standard Rx production, leading to higher productivity and quality of virtually all lenses surfaced today.

The next logical step is a highly integrated system solution: SCHNEIDER's Modulo Line with its unique combination of high level intelligence and plug-and-play simplicity. Following a new self-organizing philosophy, the cognitive machines manage the production flow all by themselves – fully self-sufficient and with the highest level of equipment utilization. With this, the Modulo Line guarantees easy lab planning and expansion as well as significant cost and time savings.



The harmony of interacting motion

Axes moving smoothly, handling systems interacting swiftly, accompanied by visual tool sensors monitoring and supervising – CCP Modulo S' processes are perfectly choreographed and controlled.

This way, the polisher can do several things at a time like e.g. simultaneous tool and lens change parallel to lens cleaning. Ultimately, its fast and precisely tuned motions form the foundation for automated polishing with highest productivity – 24/7, without interruptions.

Few tools, full range, best quality

The brand-new process generation with its S+ adaptive tool set, uses the proven "click-easy" lock system and guarantees shorter polishing times, longer tool lifetime, and provides higher flexibility.

Special attention was paid to the smoothness of lens shape especially in the sensitive lens center. Lowest waviness and best surface roughness values are the outcome – paired with an unsurpassed process stability.

Advanced polishing system

The Advanced Polishing System (APS) uses sophisticated database-driven selection routines, optimal material-specific pads and polishing routines are chosen, resulting in unbeaten polishing performance.

Unlike competing systems, the CCP Modulo S tool change is fully automated. An intelligent pad identification system avoids operator based tool mismatch. The machine operation has never been so easy. The system monitors the pad wear and sorts out worn pads based on special decision algorithms. So, the CCP Modulo strictly meets your quality requirements.

The Modulo advantage

CCP Modulo S comes with an on-board global interface philosophy that allows connection to the Modulo system.

Once connected to the Modulo system, the machine works as an integral part of this one-of-a-kind solution and is subject to the centralized monitoring Control Center. The lab manager is fully informed about the current status of the machine. Therefore, critical situations and downtime can be avoided before they arise. Higher uptimes and increased yields are guaranteed.

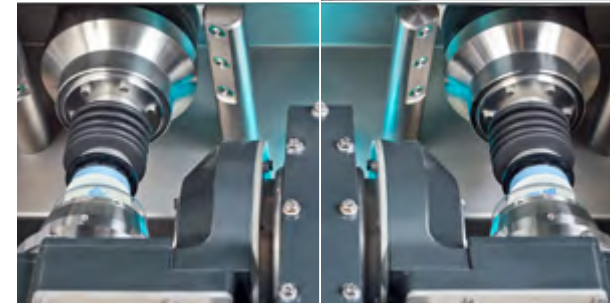
Benefits

- Unmatched quality in the market
- Increased throughput (+25%)
- Automated operation and tool change – all shift long
- Polishing of all lens designs in the widest curve range
- Perfect solution for RX and freeform lenses
- "Click-easy" disposable tools
- Long lasting S+ polishing pads
- Supports the new cognitive Modulo machine philosophy



Automation

The fast loading cycle of the automation ensures maximum productivity.



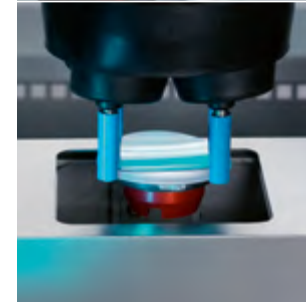
Working space

Double the throughput due to simultaneous processing of two lenses.



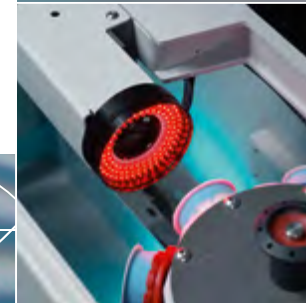
Tool magazines

The magazines carry the new generation of SCHNEIDER "click easy" polishing pads.



Washing station

The integrated washing station cleans lenses while the next set of lenses is polished.



APS

The advanced polishing system, APS, offers on-board pad control.





technical data

lens diameter	up to \varnothing 92 mm
clamping system	block \varnothing 43 mm
material	CR39, Hi-index, Polycarbonate, Trivex®
curve range	concave 0 – 18 diopters
power consumption	5 kVA avg.
air requirement	6 bar (87 psi)
weight machine	approx. 930 kg (2050 lb.)
dimensions without control panel (width x depth x height)	approx. 1690 x 1320 x 1715 mm (67 x 52 x 68 inches)

All data subject to change without notice. Please verify details with SCHNEIDER.



SCHNEIDER

We are one of the world's leading suppliers of processing solutions to the ophthalmic and (ultra-)precision optical industry. Founded in 1986 our company is known as the pioneer of freeform and setting the pace. We are distinctive for our development of new technologies and swift translation of technological concepts into customer-oriented innovations. Our success stems from the creativity, commitment and enthusiasm of our highly qualified team. With our locations in Germany, the US, Brazil, Hong Kong, China and Thailand we support our customers at any time – worldwide, with fascination for innovation.

SCHNEIDER GmbH & Co. KG

Biegenstrasse 8–12
35112 Fronhausen
Germany
Phone: +49 (64 26) 96 96-0
Fax: +49 (64 26) 96 96-100
www.schneider-om.com
info@schneider-om.com

SCHNEIDER Optical Machines Inc.

6644 All Stars Avenue, Suite 100
Frisco, TX 75033, USA
Phone: +1 (972) 247-4000
Fax: +1 (972) 247-4060
info-us@schneider-om.com

SCHNEIDER Optical Machines

do Brasil Ltda.
Avenida Eid Mansur, 621
Parque São George
CEP: 06708-070, Cotia – SP
Brazil
Phone/Fax: +55 (11) 4777-1717
info-brasil@schneider-om.com

SCHNEIDER Optical Machines Ltd.

Room 202, 2/F, APEC Plaza
49 Hoi Yuen Road
Kwun Tong, Hong Kong
Phone: +852 3563-5238
Fax: +852 3563-5240
info-hk@schneider-om.com

SCHNEIDER Optical Machines

(Shanghai) Co., Ltd.
Room 202, 2nd Floor, Building 16
481 Guiping Road
200233 Shanghai – Xuhui District
Phone: +86 (21) 61 48 00 61-120
Fax: +86 (21) 61 48 00 65
info-cn@schneider-om.com

SCHNEIDER Optical Machines

Asia-Pacific Co., Ltd.
Piya Place Lungsuan Building
29/1, Tower B, 9th Floor, Unit 9B
Soi Lungsuan Ploenchit Road
Lumpini, Pathumwan
Bangkok 10330, Thailand
Phone: +66 (0) 2014-4690-2
Fax: +66 (0) 2014-4693
info-asia@schneider-om.com

For a complete list of SCHNEIDER agencies, please visit www.schneider-om.com



Fascination for Innovation