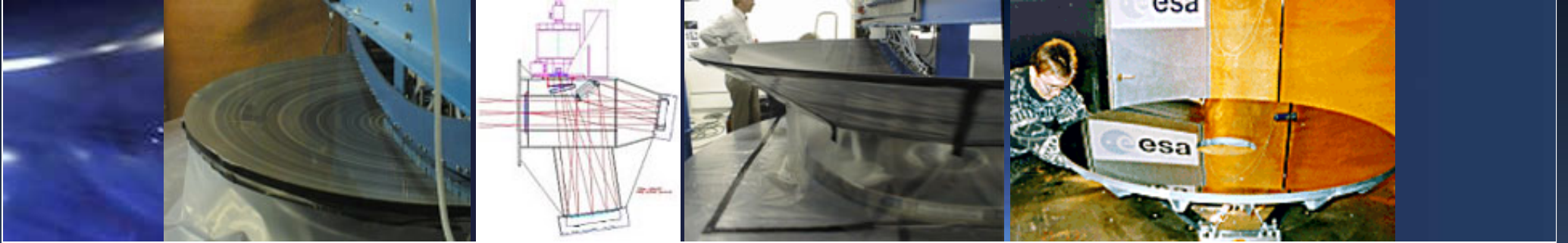


[home](#)[about](#)[portfolio](#)[contact](#)

ADM-Aeolus



ALADIN program

**Atmospheric LAsEr
Doppler INstrument**
on
ADM AEOLUS
satellite of ESA

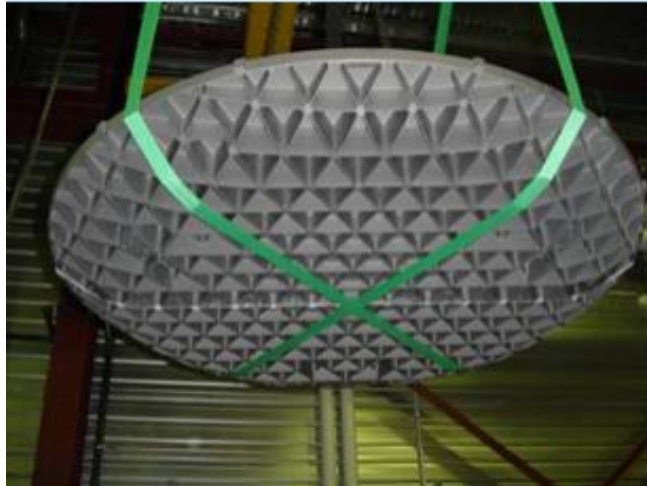
Ø1.5 m silicon carbide mirror
Parabola , F/0.9
Weight 45 kg
Sends Laser pulses at λ 355 nm
Measures atmospheric dynamics
from the back-scattered signal





ALADIN TELESCOPE

Polishing of $\text{\O}1.5$ m SiC M1 mirror
August 2004 – November 2005



M1 $\text{\O} 1.5$ m
Parabola , F/0.9
Weight 45 kg
Front surface
thickness 2.5 mm

